



Dragonflies



Damselflies

# A First Guide to the Dragonflies (Odonata) of Jalisco, Mexico

A contribution to the study of Odonata biodiversity in Jalisco, Mexico.  
This PDF includes all species known from current records, including  
scientific and private collections, iNaturalist and other sources.

All photos are © Copyrighted.

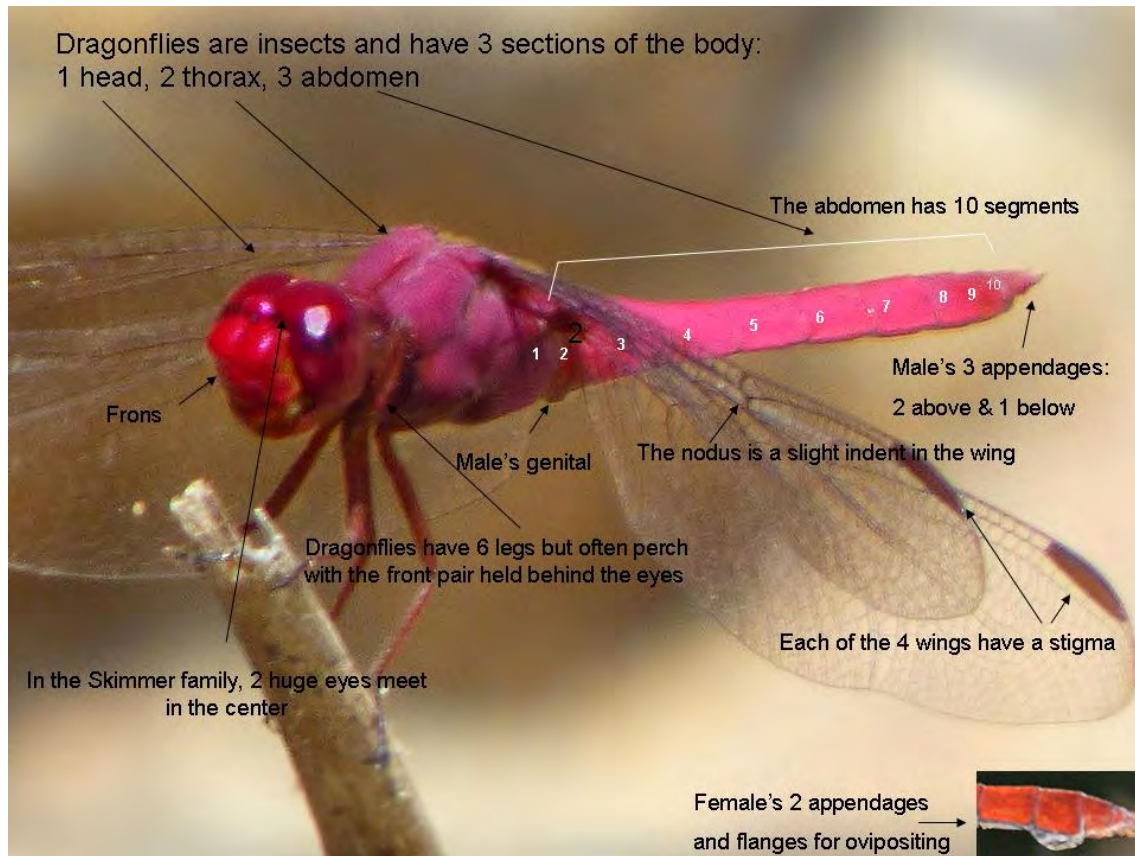
There is a glossary at the end of this PDF.

The companion website has a link to the Excel Chart  
with Jalisco's species by municipality and species maps.

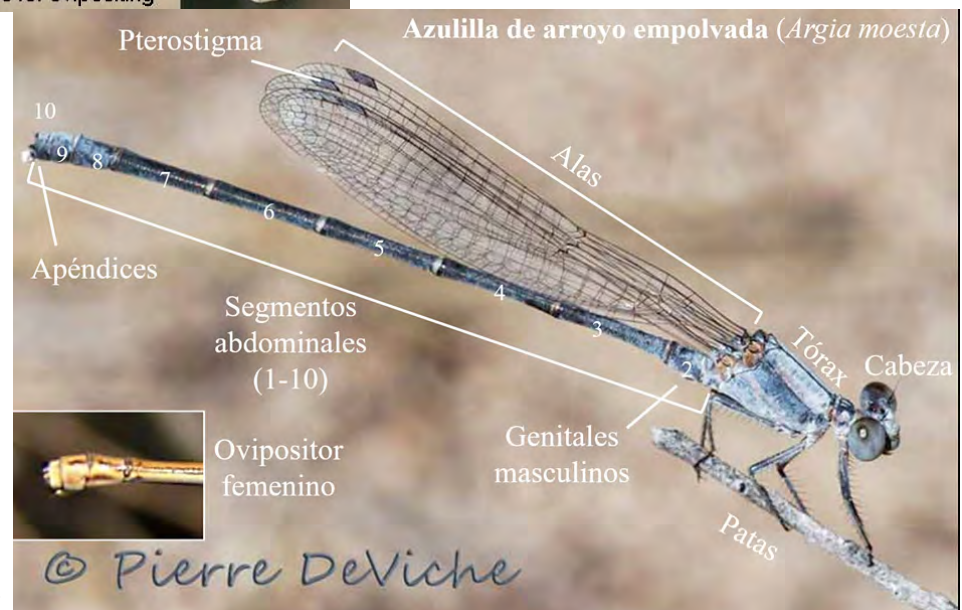
=!= =!= =!= =!= =!= =!= =!= =!= =!= =!= =!=

For help with identifications &/or to make a photo contribution, put your photograph up on iNaturalist (<https://www.inaturalist.org>)  
or contact Kathy Biggs - [azalea@sonic.net](mailto:azalea@sonic.net)

## The parts of a dragonfly's body, labeled



## The parts of a damselfly's body, labeled





# CONTENTS

Parts of Dragonfly & Damselfly Bodies, 2

About/How to Use This Guide, 4

Information about Dragonflies, 4

## Suborder I. Dragonflies, 5

### Part I. Skimmers, 6

Carmine Skimmer, 7  
 Roseate Skimmer, 8  
 Slender Skimmer, 9  
 Red Pondhawk, 10  
 Flame-tailed Pondhawk, 11  
 Claret Pondhawk, 12  
 Red-mantled Dragonlet, 13  
 Red Rock Skimmer, 14  
 Mayan Setwing, 15  
 Cardinal Meadowhawk, 16  
 Neon Skimmer, 17  
 Flame Skimmer, 18  
 Needham Skimmer, 19  
 Hercules Skimmer, 20  
 Red-tailed Pennant, 21  
 Red Saddlebags, 22  
 Vermilion Saddlebags, 23  
 Striped Saddlebags, 24  
 Variegated Meadowhawk, 25  
 Mexican Amberwing, 26  
 Eastern Amberwing, 27  
 Slough Amberwing, 28  
 Wandering Glider, 29  
 Spot-winged Glider, 30  
 Hyacinth Glider, 31  
 Dwarf Glider, 32  
 Garnet Glider, 33  
 Aztec Glider, 34  
 Brown Setwing, 35  
 Black Setwing, 36  
 Seaside Dragonlet, 37  
 Plateau Dragonlet, 38  
 Blue Rock Skimmer, 39  
 Blue Dasher, 40  
 Western Pondhawk, 41  
 Eastern Pondhawk, 42

Great Pondhawk, 43  
 Pin-tailed Pondhawk, 44  
 Black Pondhawk, 45  
 Blue-eyed Setwing, 46  
 Thornbush Dasher, 47  
 Spot-tailed Dasher, 48  
 Square-spotted Dasher, 49  
 Three-striped Dasher, 50  
 Dusky Dasher, 51  
 Black Dasher, 52  
 Upland Dasher, 53  
 undescribed Dasher, 54  
 Sierra Made Sylph, 55  
 Jade-striped Sylph, 56  
 White-tailed Sylph, 57  
 Delta-spotted Sylph, 58  
 Slender Clubskimmer, 59  
 Vivacious Clubskimmer, 60  
 Common Blue-eye, 61  
 Straw-colored Sylph, 62  
 Evening Skimmer, 63  
 Black-winged Dragonlet, 64  
 Filigree Skimmer, 65  
 Desert Whitetail, 66  
 Hoary Skimmer, 67  
 Gray-waisted Skimmer, 68

### Part II. Spiketails, 69

Apache Spiketail, 69

### Part III. River Cruisers, 70

Western River Cruiser, 70

### Part IV. Clubtails, 71

Zebra-striped Sanddragon, 72  
 Mexican Sanddragon, 73  
 undescribed Sanddragon, 74  
 Gray Sanddragon, 75  
 Belyshevi's Sanddragon, 76

Broad-striped Forceptail, 77  
 Narrow-striped Forceptail, 78  
 Angle-tipped Forceptail, 79  
 Two-striped Leafaiftail, 80  
 West Mexican Leafaiftail, 81  
 Pacific Leafaiftail, 82  
 Luis's Leafaiftail, 83  
 Yellow-legged Ringtail, 84  
 One-striped Ringtail, 85  
 Straight-tipped Ringtail, 86  
 Boa Ringtail, 87  
 Plateau Ringtail, 88  
 Aztec Clubtail, 89  
 Tehuantepec Knobtail, 90

### Part V. Darners, 91

Common Green Darner, 92  
 Giant Darner, 93  
 Amazon Darner, 94  
 Blue-faced Darner, 95  
 Mangrove Darner, 96  
 Fiery Darner, 97  
 Pale-green Darner, 98  
 Caribbean Darner, 99  
 Malachite Darner, 100  
 Secretive Darner, 101  
 Turquoise-tipped Darner, 102  
 Black-tailed Darner, 103  
 Blue-eyed Darner, 104  
 Ditzler's Darner, 105  
 Bar-sided Darner, 106  
 Twilight Darner, 107  
 Helen's Darner, 108

## Suborder II. Damselflies, 109

### Part VI. Jewelwings, 110

American Rubyspot, 111  
 Calvert's Rubyspot, 112  
 Canyon Rubyspot, 113  
 Smoky Rubyspot, 114  
 Highland Rubyspot, 115  
 Racket-tipped Rspot, 116  
 Bronze Rubyspot, 117

### Part VII. Pond Damsels, 118

Painted Damsel, 119  
 Big Red Dancer, 120  
 Fiery-eyed Dancer, 121  
 Amethyst Dancer, 122  
 Springwater Dancer, 123  
 Spine-tipped Dancer, 124  
 Variable Dancer, 125  
 Cerulean Dancer, 126  
 Celestial Dancer, 127  
 Sierra Madre Dancer, 128  
 Harkness' Dancer, 129  
 Apache Dancer, 130  
 Aztec Dancer, 131  
 Anna's Dancer, 132  
 Yaqui Dancer, 133  
 Tarascan Dancer, 134  
 Sabino Dancer, 135  
 Oculate Dancer, 136  
 Ulmic Dancer, 137  
 Tezpop Dancer, 138  
 Dusky Dancer, 139  
 Powdered Dancer, 140  
 Purple Dancer, 141  
 May's Dancer, 142  
 Neotropical Bluet, 143  
 Claw-tipped Bluet, 144  
 Familiar Bluet, 145

Arroyo Bluet, 146  
 West Mexican Yellowface, 147  
 Mexican Forktail, 148  
 Rambur's Forktail, 149  
 Tiny Forktail, 150  
 Black-fronted Forktail, 151  
 Citrine Forktail, 152  
 Black and White Damsel, 153  
 Orange-striped Threadtail, 154  
 Amelia's Threadtail, 155  
 Ruddy Threadtail, 156  
 Desert Firetail, 157  
 Hyacinth Firetail, 158  
 Striped Firetail, 159  
 Middle American Pearlwing, 160  
 Red-tipped Swampdamsel, 161  
 Cream-tipped Swampdamsel, 162  
 Lemon-tipped Helicopter, 163

### Part VIII. Spreadwings, 164

Great Spreadwing, 165  
 Plateau Spreadwing, 166  
 Blue-striped Spreadwing, 167  
 Tikal Spreadwing, 168  
 Chalky Spreadwing, 169

### Part IX. Other Families, 170

Shadowdamsels, 170

Desert Shadowdamsel, 170

Bannerwings, 170

Blue Cora, 171

Glossary, 172

List of Photographers, 173

# About/How to Use This Guide

## ORGANIZATION

This guide is organized first by suborder and then within suborder by family. The families are ordered from most to least often seen. Within families, the dragonflies are ordered by color and similarity with the most frequently seen species followed by less frequently seen species. The dragonflies are grouped within genus by color except for where one species looks much more like those in another genus. Because dragonflies change their color as they mature, color is not always the best indicator of species, but it is what most amateurs notice first.

## PHOTOS

On each page a mature male is presented first, followed by a female. Sometimes when a photo of a female has yet to be acquired, a second male is shown. Other times a detail is presented. Be aware that young males start life looking like a female.

When the author has found no photographs available, sketches are provided when possible.

## INFORMATION

Below or to the side of the male image is text describing the male, then the female of the species. Similar species may be mentioned. Behavior may be mentioned. The habitat where the species breeds is described and then the known flight season is listed. Dragonflies can fly ~48 KPH (30 MPH) and thus can be found far from water while feeding. There is much still to be learned about the dragonflies of Jalisco and therefore the flight data is followed by the words thus far. YOU can make contributions to the knowledge by adding your observations to either

iNaturalist.org or its sister site, Naturalista.org.

Occasionally a note is added when further information would be helpful.



**Dragonflies**



**Damselflies**

## Information about Dragonflies

### LIFE CYCLE

Dragonflies begin their lives as eggs laid in water or in plant matter in the water.

The eggs hatch into tiny nymphs that eat other small creatures. A nymph may go through about 12 molts as it matures. With each molt, the wing-pads grow longer. On its last molt the nymph sheds its exoskeleton and emerges as a winged, air-breathing, flying insect.

All dragonflies are carnivores. They eat other insects and sometimes spiders. They have teeth but do not bite people unless restrained.

They do not have stingers and therefore cannot sting, but some have learned to mimic that behavior when held in the hand!

The flying dragonfly or damselfly lives for only several months to up to nearly a year.

Some species in Jalisco may be able to complete their life cycle in less than one year.

### HOW TO TELL A DRAGONFLY FROM A DAMSELFY

Dragonflies are usually bulkier than damselflies and are stronger fliers. Often their large eyes actually touch each other. They usually perch with their wings held out to their sides; sometimes set in a downward and forward position.

Damselflies are always thin and dainty with their eyes widely separated giving them a hammer-headed look. Many perch with their wings held together. One family spreads their wings delta-like.

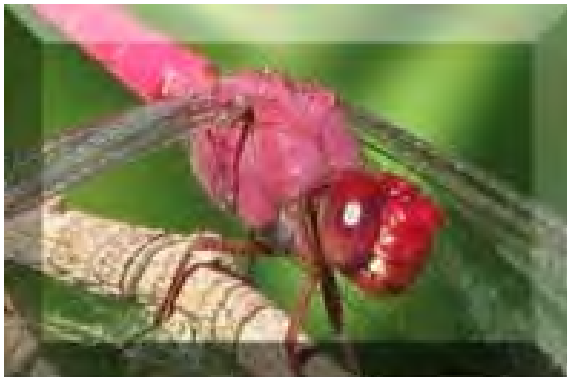


# SUBORDER I:

**Four Anisopteran families of dragonflies have been documented in Jalisco:**

**The three most common are**

## **I. Skimmers**



**Part I—Skimmers (Libellulidae)** —62 species have been documented in Jalisco. Skimmers have eyes that touch. Males and females can be differently colored and they often perch on vegetation.

## **II. Clubtails**



**Part II—Clubtails (Gomphidae)** —19 species have been documented in Jalisco. Clubtails have widely separated eyes and often a clubbed abdomen. They usually perch on rocks and sandbars.

## **III. Darners**



**Part III—Darners (Aeshnidae)** —16 species have been documented in Jalisco. Darners have eyes that touch and patterned abdomens. They are usually in flight & hang perch on vegetation.

# Part I—Skimmers (Libellulidae)

Common Name (Scientific Name)      photos & description

—62 species documented in Jalisco

=!= != != != != !=

## Quick Guide to the Skimmers—22 genera —the 4 most common:

### **Pondhawks** *Erythemis*

Medium-sized, most show green or blue coloration, some show red. Perch low on the ground or on floating vegetation.



### **Speckled Dashers** *Micrathyria*

Small and usually found on ponds or pools of rivers, all have white faces and spots atop the abdomen.



### **Sylphs** *Macrothemis*

Medium-sized, usually found on streams, most perch on rocks and sandbars. Many have paired spots atop S7.



### **King Skimmers** *Libellula*

Large-sized, many have brilliant colors and some have patterned wings. Perch atop vegetation.





## Carmine Skimmer (*Orthemis discolor*)



**photos:** male and female

**size:** medium/large, length 49-52 mm

**male:** glossy red eyes & face; carmine red thorax and abdomen; wings clear with black veins including costa

**female:** orange-brown; somewhat obscured but complex pale pattern on thorax sides, pale stripe top center; noticeable flanges near bottom end of abdomen; leading edge of wing and costa dark

**similar species:** very similar to the **Roseate Skimmer** which has purplish eyes, face & frons

**habitat:** ponds and slow moving water

**Jalisco flight season:** flies all year



## Roseate Skimmer (*Orthemis ferruginea*)



**photos:** male and female

**size:** medium/large, length 51-53 mm

**male:** eyes purple with metallic purple frons; abdomen bright lilac going to red at the tip; wings clear with sometimes reddish veins

**female:** tan-brown; prominent complex pale pattern on thorax sides, pale stripe top center; noticeable flanges on lower abdomen end

**similar species:** very similar to the more common **Carmine Skimmer** which has red eyes and face; all wing veins are dark

**habitat:** ponds and slow moving water

**Jalisco flight season:** flies all year

**Roseate vs Carmine males -**

they are often  
much more  
difficult  
than this  
to tell apart





## Slender Skimmer (*Orthemis levis*)



**photos:** male and female

**size:** medium, length ~44 mm, wingspan ~44 mm

**male:** slender red abdomen with black atop S7 & around S8-10;  
wide pale stripes on side of thorax; wings have yellow costa

**female:** slender abdomen with noticeable flanges, prominent  
wide pale stripes on side of thorax

**similar species:** *Tramea* have color in their wings and  
do not hold them down and forward

**habitat:** ponds and slow moving water

**Jalisco flight season:** months 1, 2, 4, 6 -11 thus far



## Red Pondhawk (*Erythemis haematogastra*)



**photos:** male and young female

**RARE in Jalisco** - please report any sightings

**size:** medium/large, length 45-50 mm, wingspan 72-78 mm

**male:** slender red abdomen, usually with thin black rings, S1&2 expanded; brown thorax and small basal wing patches; dark face

**female:** shaped like male, color duller, face dark;  
wingtips can be slightly colored

**behavior:** perches low on vegetation and wood

**habitat:** found at Rio del Tuito in Yelapa in 2017 & 2019

**Jalisco flight season:** months 1-3, 12 thus far





## Flame-tailed Pondhawk (*Erythemis peruviana*)



**photos:** male and female

**size:** medium, length 36-43 mm, wingspan 58-70 mm

**male:** flame-red abdomen contrasts with jet-black thorax; small amount of dark in basal portion of wing; black legs

**female:** tan face; brown thorax sides with noticeably paler top; abdomen pale brown with dark brown rectangles on side of each segment; pale stigma

**behavior:** perches on ground or vegetation

**habitat:** open marshes; heavily vegetated ponds

**Jalisco flight season:** months 6, 10-12 thus far



## Claret Pondhawk (*Erythemis mithroides*)



**photos:** male and female

**size:** medium, length ~38 mm

**male:** body all red with basal brown-red spot in hindwings that extends from front to back

**female:** light reddish brown with dark rings; pointed ovipositor; wings mostly clear with dark stigma

**behavior:** perches on the ground or vegetation

**habitat:** swampy, well-vegetated ponds & still waters

**Jalisco flight season:** months 1,6,11-1 thus far

**Note:** this may be a separate species than those found farther south





## Red-mantled Dragonlet (*Erythrodiplax fervida*)



**photos:** male and female

**size:** small, 32-36 mm, wingspan ~50 mm

**male:** red face and eyes, abdomen and thorax red with black patterning;  
dark red basally on each wing

**female:** like male but with a continuous, fairly wide black stripe atop  
abdomen; can be tan where male is red; ovipositor points straight down;  
pale appendages

**habitat:** ponds and lagoons, slow moving water

**Jalisco flight season:** months 1-4, 8, 9, 11, 12 thus far





## Red Rock Skimmer (*Paltothemis lineatipes*)



**photos:** male and female  
**size:** medium/large, length 44-54 mm,  
wingspan 90-95 mm

**male:** abdomen intricately patterned with rusty red and black; face and eyes rusty red; rusty red on inner wings usually almost to nodus, dark stigma; thorax can be olive-brown on sides

**female:** tan/brown; intricate pattern;  
no color in wings; no red on body

**similar species:** **Flame Skimmer** has no black on abdomen

**behavior:** lands on rocks midstream

**habitat:** rocky streams

**Jalisco flight season:** months 2,4,5,7-12 thus far





## Mayan Setwing (*Dythemis maya*)



**photos:** male & female

**size:** medium, length 40-45 mm, wingspan 72-82 mm

**male:** red body, without any black: red-orange basal wing patches; black stigma; bright red face and eyes; no white on thorax sides

**female:** like male but orange-brown with dark wingtips

**similar species:** **Cardinal Meadowhawk** has white dot on side of thorax and usually a small amount of black at base of wings

**behavior:** wings held down and forward ("set")

**habitat:** ponds in the open, slow moving water

**Jalisco flight season:** months 1-3, 5-12 thus far





## Cardinal Meadowhawk (*Sympetrum illotum*)



**photos:** male and female

**RARE in Jalisco** - please report any sightings

**size:** small/medium length 32-40 mm, wingspan 55-60 mm

**male:** cardinal red head, thorax, abdomen, wing veins; red on wings is diffuse, only close to body and near the leading edge, wings usually have small dark streaks at extreme base; thorax sides have two white spots/dashes; body with no black, stubby appearance; red legs

**female:** less colorful; pale red legs; abdomen wider

**habitat:** ponds, lakes

**Jalisco flight season:** flies all year

## Neon Skimmer (*Libellula croceipennis*)



**photos:** male & female

**size:** medium/large, length 46-59 mm, wingspan 72-90 mm

**male:** very wide bright neon red/pink abdomen; thorax and underside can be tawny; red on wings only adjacent to body and near leading edge - it does not extend to the nodus; the stigma on each wing has a dark outline

**female:** wide abdomen is tan/orange with a noticeable pale stripe along the top of the thorax; wings mostly clear, lacking a strong colorful streak, and the 2nd vein from front is NOT yellow

**similar species:** male **Flame Skimmer** has color in the wings that extends to the nodus fore to back; female **Flame Skimmers** have more color in their wings with the 2nd vein yellow; their abdomens are not as wide (see next page)

**habitat:** ponds in the open and slow moving water

**Jalisco flight season:** flies all year



## Flame Skimmer (*Libellula saturata*)



**photos:** male and female

**size:** medium/large, length 50-60 mm, wingspan 85-93 mm

**male:** red-orange face, thorax, abdomen, legs, appendages; red color in the wing extends to the nodus fore to back with a darker basal streak;

2nd vein yellow

**female:** tan/orange with noticeable pale stripe top of thorax; wings have orange streak at leading edge with the 2nd vein yellow; noticeable flanges near end of abdomen; a few females become male-like in their coloration

**similar species:** **Neon Skimmer** is more pink, has wider abdomen; **Needham's Skimmer** has the color in the wing confined to leading edge

**habitat:** ponds in the open and slow moving water

**Jalisco flight season:** months 1, 3-12 thus far



## Needham's Skimmer (*Libellula needhami*)



Alfredo Dorantes Euan



Carlos G Velazco-Macias

**photos:** male and female

**RARE in Jalisco** - please report any sightings

**size:** medium/large, 45-57 length mm, wingspan 73-83 mm

**male:** red color in the wing confined to leading edge, ; dark streak atop abdomen thickens towards end

**female:** like male but pale yellow color, dark wingtips, pale stigma

**similar species:** Neon Skimmer is more pink, has wider abdomen with no black

**habitat:** ponds, lakes; usually found near the coast

**Jalisco flight season:** month 8 thus far



## Hercules Skimmer (*Libellula herculea*)



**photos:** male and female

**RARE in Jalisco** - please report any sightings

**size:** large, ~55 mm, wingspan ~85 mm

**male:** cherry red abdomen with black spots atop of S7 & 8, black tip; thorax becomes silvery pruinose on the sides, shiny dark on top; black legs; clear wings with dark veins and stigma

**female:** like male but lacks silver thorax sides and abdomen is wider

**habitat:** ponds, lakes, canals

**Jalisco flight season:** 7-9, thus far

## Red-tailed Pennant (*Brachymesia furcata*)



**photos:** male and female

**size:** medium, 38-46 mm, wingspan 66-73 mm

**male:** Meadowhawk-like; stocky with S2 expanded; face & abdomen red; thorax brown; each abdomen segment with thin dark ring, black spots atop segment 8 & 9; wings have dark veins, amber at base with long stigma; jet black legs;

"ski-tipped" appendages

**female:** brown with pale stripe between wings & at abdomen base; small black spots atop last segments

**similar species:** Neon and Flame Skimmers have pale legs and color in the wings

**habitat:** ponds, lakes, canals

**Jalisco flight season:** months 5-12 thus far



## Red Saddlebags (*Tamea onusta*)



**photos:** male and female

**size:** medium, length 42-45 mm, wingspan 80-90 mm

**male:** red body; irregular dark red basal patch in hindwings, often with large clear area near the body, abdomen has black atop last 3 segments

**female:** like male but orange-brown, clear wingtips;  
dark spots atop segments 8-9

**behavior:** oviposit in tandem with female dropping by herself to water surface and then picked back up by the male ("Tamea Dance")

**habitat:** ponds

**Jalisco flight season:** months 1, 4-12 thus far



## Vermilion Saddlebags (*Tamea abdominalis*)



**photos:** male and scan of female

**size:** medium, length 44-50 mm, wingspan 79-87 mm

**male:** brown/red thorax without stripes; slender red abdomen with black diamond shaped patches atop last 3 segments; wings have narrow dark red basal patch

**female:** like male but orange-brown

**behavior:** oviposit in tandem with female dropping by herself to water surface and then picked back up by the male ("Tamea Dance")

**habitat:** ponds

**Jalisco flight season:** months 3-7 thus far



**Striped Saddlebags (*Tramea darwini*)** *note: formerly T. calverti*



© Juan Carlos Garcia Morales



© Rubén Alejandro Ramírez García

**photos:** male and female

**RARE in Jalisco** - please report any sightings

**size:** medium, length 45-49 mm, wingspan 80-86 mm

**male:** 2 pale stripes on sides of thorax; basal color in wing dark and narrow; abdomen tip all dark

**female:** tawny; 2 broad side stripes on thorax; top of S8-10 of abdomen black

**similar species:** **Antillean Saddlebags** lacks stripes on thorax sides as does **Red Saddlebags** which has larger amount of red at wing bases

**behavior:** oviposit in tandem with female dropping by herself to water surface and then picked back up by the male ("Tramea Dance")

**habitat:** warm shallow ponds and other quiet waters, including brackish and temporary

**Jalisco flight season:** month 7 thus far

## Variegated Meadowhawk (*Sympetrum corruptum*)



**photos:** male and female

**size:** medium, 37-42 mm, wingspan 60-64 mm

**male:** quite variable; olive-green/gray and reddish plaid, turns redder as it ages, unique white "porthole-like" spots low on abdomen; thoracic stripes not always complete but end in yellow spot; cranberry eyes; bi-colored stigma

**female:** like male but less red; more muted &/or pastel

**habitat:** all slow waters

**behavior:** known migrant

**Jalisco flight season:** months 7-12 thus far



## Mexican Amberwing (*Perithemis intensa*)



**photos:** male and female

**size:** very small, length 23-29 mm, wingspan 41-44 mm

**male:** small and stubby; all orange colored, including the wings which have pale yellow-orange stigmas and veins, the forewing triangle has 2 cells and the hindwing triangle has cross-veins; the thorax is without bold pale patches; immatures are more yellow

**female:** like male but the wings have amber-orange bands with dark spots, darker stigmas than male with the forewing and hindwing triangles the same as on the male

**behavior:** perches in the sun, often on twigs, close to water surface

**similar species:** **Slough Amberwing** has orange-red stigma, the outside of the legs are dark and it prefers to perch in the shade; the **Eastern Amberwing** has whiteish patches on the sides of the thorax, the stigma is red-orange and there is a dark spot at the outer angle of the wing's triangles.

**habitat:** slow waters and ponds      **Jalisco flight season:** flies all year



## Eastern Amberwing (*Perithemis tenera*)



© Pierre Deviche



© Pierre Deviche

**photos:** male and female

**size:** very small, length 19-25 mm, wingspan 33-43 mm

**male:** tiny and stubby; wings are yellowish-orange, they may have small dark spots, stigma is reddish; thorax is brownish with two pale side stripes; abdomen is more patterned than that of the **Mexican Amberwing**

**female:** brown body; variable dark patched/spotted wings

**similar species:** the **Mexican Amberwing** has pale stigma and veins, **Slough Amberwing** has outside of legs dark

**behavior:** perches in the sun; mimics wasp behavior by waving wings and abdomen up and down

**habitat:** ponds, lakes, slow streams, even brackish waters

**Jalisco flight season:** months 2-10 thus far

**Note:** Recently the species *P. mooma* was merged with this species in this area (May 2020).



## Slough Amberwing (*Perithemis domitia*)



**photos:** male and female

**size:** very small, length 22-25 mm, wingspan 34-41

**male:** tiny and stubby; sides of thorax with pale stripes; wings reddish-orange with red stigma; outside of legs are dark

**female:** brown body; basal half of wings amber with dark spots

**similar species:** the **Mexican Amberwing** has pale stigma

**behavior:** prefers to perch in the shade

**habitat:** ponds, puddles in slow waters

**Jalisco flight season:** flies all year

<Slough vs Mexican males >



## Wandering Glider (*Pantala flavescens*)



**photos:** females

**size:** medium, 45-49 mm; wingspan ~76 mm

**male & female:** sexes both marked the same; golden yellow colored with dark line atop abdomen; clear wings, hind wing very wide

**similar species:** **Spot-winged Glider** is browner and has a small basal dark spot on hind wings

**behavior:** known migrant, almost constantly in flight; hang perch

**habitat:** fish-less ponds in the open; slow moving water

**Jalisco flight season:** months 1-4, 6-12 thus far





## Spot-winged-Glider (*Pantala hymenaea*)



**photos:** males

**size:** medium, 45-47 mm; wingspan ~75 mm

**male & female:** body earth-tones with round dark basal spot on hindwings (spot can be difficult to see )

**behavior:** almost constantly in flight; hang perch

**habitat:** ponds in the open; slow moving water

**behavior:** known migrant, almost constantly in flight; hang perch

**similar species:** **Wandering Glider** is more golden, lacks basal wingspot

**Jalisco flight season:** months 7-11 thus far

## Hyacinth Glider (*Miathyria marcella*)



Julio Álvarez

**photos:** male and female

**size:** small/medium, 35-38 mm, wingspan 58-66 mm

**male:** straw-colored abdomen with amber-tinted wings, hindwing wide with noticeable straight dark diffuse basal wing-band and golden wing-veins

**female:** like male, white stripe on thorax side

**similar species:** Aztec Glider has more patterned abdomen and less color in the wings

**behavior:** almost constantly in flight; hang perch

**habitat:** ponds in the open; slow moving water where water hyacinth is plentiful

**Jalisco flight season:** months 2, 3, 5-12 thus far



© Greg Lasley



## Dwarf Glider (*Miathyria simplex*)



**photos:** male and female

**size:** small, length 28-32 mm, wingspan 48-52 mm

**male:** abdomen dark red; wide hind wing has a large brown patch at the base which reaches outward to cover most of triangle but leaving a clear "window", leading veins show red all the way out to the very small stigma; frons NOT metallic violet

**female:** not all are as thin as this photo; like male but abdomen patterned yellow and brown; no color in wings beyond patch

**behavior:** almost constantly in flight; hang perch

**habitat:** slow moving waters

**Jalisco flight season:** months 5, 10 thus far

## Garnet Glider (*Tauriphila australis*)



**photos:** male and female

**size:** medium, length 40-47 mm; wingspan ~75 mm

**male:** wide hind wings with semicircular basal dark patch, some basal veins red; abdomen red with thin black rings; solid dark thorax

**female:** like male but less colorful; sometimes only a hint of color in the wings

**similar species:** Red Pondhawk has an expanded first & second segments

**behavior:** almost constantly in flight; hang perch

**habitat:** ponds, rivers streams and canals with water hyacinths

**Jalisco flight season:** month 6 thus far





## Aztec Glider (*Tauriphila azteca*)



**photos:** male and female

**size:** medium, 40-44 mm; wingspan ~75 mm

**male & female:** earth-toned with strongly patterned abdomen; wide hind wing with semi-circular basal dark patch, small stigma

**similar species:** **Garnet Glider** has red abdomen;

**Hyacinth Glider** has colorful wing veins

**behavior:** almost constantly in flight; hang perch

**habitat:** ponds in the open; slow moving water

**Jalisco flight season:** months 5-10 thus far

## Brown Setwing (*Dythemis sterilis*)



**photos:** male and female

**size:** medium and thin, length 37-42 mm, wingspan 30-35 mm

**male:** very slender abdomen with paired slender triangles, when mature it is dark pruinose; thorax with complex thin lines; face pale with eyes capped in brick red; slight basal wing patches

**female:** like male but extreme wing tips usually dark

**habitat:** slow moving streams, rivers and ponds

**Jalisco flight season:** flies all year



## Black Setwing (*Dythemis nigrescens*)



**photos:** mature and female

**size:** large but thin, length 37-45 mm,  
wingspan 62-72 mm

**male:** when mature, pruinose dark thorax with thin  
abdomen; face and eyes dark with dark metallic  
frons; no basal wing patches, long dark stigma

**female:** like immature male with pale marks on  
thorax and abdomen; wing tips brown; dark  
metallic frons

**habitat:** slow moving water

**Jalisco flight season:** flies all year



## Seaside Dragonlet (*Erythrodiplax berenice*)



**photos:** male & both male-like & spotted form females

**size:** small, length 31-35 mm, wingspan 44 -56 mm

**male:** all black when mature; wings clear with stigma laterally bi-colored, NO small basal dark patch;  
immature has yellow on segments 1-7; eyes reddish above

- female:** (2 forms 1. the male-like form has S1-7 remaining yellow longer than males; no spots near wing nodus;  
abdomen becomes dark before thorax  
2. spotted form juvenile female has thorax with yellow and black "tiger striping" and wings with brown clouding at nodus

**habitat:** saline waters; usually found along the coast at sea level

**Jalisco flight season:** months 1, 9, 11 thus far



## Plateau Dragonlet (*Erythrodiplax basifusca*)



**photos:** male and female

**size:** small, length 24-34 mm, wingspan 43-53 mm

**male:** dark abdomen develops thin pale blue pruinosity on abdominal S2-7; face tawny to metallic black; wings clear except hind wing often with small basal dark amber patch, long stigma

**female:** stubby, golden yellow, interrupted brown side stripe; dark rectangular triangles on S4-8; long stigma

**habitat:** marshy areas along moving water

**Jalisco flight season:** flies all year





## Blue Rock Skimmer (*Paltothemis cyanosoma*)



**photos:** male and appendages from paratype specimen

**RARE** - please report any sightings

**size:** medium/large, length 48-51 mm, wingspan ~90mm

**male:** frons metallic purple; body dark with blue pruinosity on thorax, S1-3&10, slight blue banding at segments; hindwing lacks a basal spot

**female:** dark labrum on face, thorax brown, prothorax pale brown with

dark brown stripes; abdomen dark brown with yellow spots

**behavior:** perch on exposed rocks at sunny spots

**habitat:** streams in woodland or forests at low altitude

**Jalisco flight season:** months 1, 8, 10, 11



## Blue Dasher (*Pachydiplax longipennis*)



**photos:** male and female

**size:** medium, length 32-45 mm, wingspan 48-50 mm

**male:** pruinose blue, developing dark tip, tan under segment 1-3; striped thorax can become all blue; teal green/blue eyes; distinctive white face with black between the eyes; wings, often held downward, can show brown tinted areas; thorax often becomes completely pruinose; no pale spots atop abdomen

**female:** rectangular buff marks on dark background; no other is like it; white face

**similar species:** Western and Eastern Pondhawks have green faces; the Speckled Dashers (*Micrathyria*) have spots atop abdomen

**behavior:** unlike Pondhawks, don't perch on ground or floating vegetation unless it is windy

**habitat:** ponds, slow waters

**Jalisco flight season:** months 5-8 thus far

## Western Pondhawk (*Erythemis collocata*)



© Ricardo Arredondo



© Kevin Meza Fernández

photos: young male and female

**Rare in Jalisco** - please report all sightings

**size:** small/medium, length 39-42 mm, wingspan 63-65 mm

**male:** pruinose blue with bright green face; deep blue eyes; dark appendages; immature like female, the blue color is pruinosity where the thorax is the last to turn blue, no dark patches/spots/bands

**female:** emerald green body with a thin dark line along top, often showing some yellow; abdomen much thicker than **Great Pondhawk**

**similar species:** **Eastern Pondhawk** males have white appendages as do the females which are also more patterned;

**Blue Dasher** has white face as do **Speckled Dashers**

**behavior:** usually perches low, often on or near the ground or on floating vegetation; known to eat other dragonflies

**habitat:** ponds, pools in creeks

**Jalisco flight season:** month 7 thus far



## Eastern Pondhawk (*Erythemis simplicollis*)



**photos:** male and female

**size:** medium, length 36-48 mm, wingspan 63-65 mm

**male:** pruinose blue with bright green face; deep blue eyes; white appendages; immature colored like female with the blue colored pruinosity on the thorax being the last so the green stays the longest there; wings with no dark patches/spots/bands

**female:** emerald green body with pale and dark areas along abdomen; white appendages; spout-like ovipositor

**similar species:** **Western Pondhawk** males have dark appendages as do the females which are also less patterned; **Blue Dasher** has white face as do **Speckled Dashers**

**behavior:** usually perches low, often on or near the ground or on floating vegetation; known to eat other dragonflies; males display white appendages held upward in a spiraling duel face to face with other males

**habitat:** ponds, creek pools

**Jalisco flight season:** months 9 & 10 thus far [check photos/specimens closely for appendage color]0

## Great Pondhawk (*Erythemis vesiculosa*)



**photos:** male and female  
**size:** large and long, length 55-65 mm, wingspan 80-82 mm  
**male:** narrow long abdomen with dark and green bands;  
green face, eyes green-gray; appendages white;  
juvenile has green stigma  
**female:** like male; eyes dark; thin abdomen with short  
inconspicuous ovipositor  
**behavior:** often flies with abdomen raised 30 degrees;  
perches with wings held forward; wary  
**habitat:** ponds; pools of creeks and rivers  
**Jalisco flight season:** flies all year





## Pin-tailed Pondhawk (*Erythemis plebeja*)



**photos:** male and 2 females

**size:** medium but very long, length 41-48 mm,  
wingspan 74-75 mm

**male:** when fully mature, all black including face; clear wings with small dark basal patch & pale yellow stigma; legs all black; long narrow abdomen with bulbous S1-2, yellow appendages; when immature, abdomen patterned yellow & dark

**female:** like immature male; much less black on abdomen; noticeable scoop-like ovipositor under S9 points straight downward; wings clear; can become almost as dark as male with maturity

**similar species:** female **Eastern & Western Pondhawks** are not this thin nor long; **Black Pondhawk** has wider abdomen

**behavior:** perches with wings held forward

**habitat:** slow moving water

**Jalisco flight season:** months 1-4, 6-12  
thus far



## Black Pondhawk (*Erythemis attala*)



**photos:** males and females

**size:** medium, length 42-44 mm, wingspan 69-80 mm

**male:** when mature all black except for pale appendages;  
hindwings with large semicircular black basal spot

**female:** paired dull yellow spots atop S3-6; basal spot on hind wing is smaller  
and paler than on male; conspicuous spout-like ovipositor under tail end  
points straight down; some females become all black

**habitat:** ponds with shaded edges - often found in dense vegetation

**Jalisco flight season:** months 1-4, 6-12 thus far



## Blue-eyed Setwing (*Dythemis nigra*)



© Dave Biggs

**photos:** males and female in flight  
**RARE in Jalisco** - please report any sightings  
**size:** small/medium, 34-41 mm, wingspan 56-58 mm  
**male:** blue eyes; white face, top of frons dark metallic blue; wings held forward; patterned thin abdomen with largest spot on S7, no spot on S6  
**female:** metallic blue frons; wingtips may be dark; 2 broad yellow spots sides of S2; small rounded bluish spot side of S7  
**similar species:** **Thornbush Dasher** lacks facial metallic dark spot; abdomen has larger pale spots including S6  
**habitat:** slow moving water  
**Jalisco flight season:** 1, 2, 6, 8, 10, 11 thus far



© Juan Cruzado Cortés



© Kathy Biggs

## Thornbush Dasher (*Micrathyrja hagenii*)



**photos:** male and female

**size:** small, length 31-36 mm, wingspan 45-52 mm

**male:** white face; patterned abdomen with twin spots on S7 that have rounded notches top and bottom;

stripe on side of thorax forked at the top

**female:** like male but more heavily patterned atop the wider abdomen, with paired elongate spots

**similar species:** **Blue-eyed Setwing** has pale markings that are quite small until the large ones on S7, lacks spots atop S6;

**Square-spotted Dasher** - large spots on S7 have square shape without notches, slightly clubbed, thinner stripes atop other segments

**habitat:** ponds, slow moving water

**Jalisco flight season:** months 1, 2, 4, 5, 7-12 thus far





## Spot-tailed Dasher (*Microthyria aequalis*)



**photos:** male and female

**size:** small, length 28-33 mm, wingspan 45-52 mm

**male:** white face, blue-green eyes; mostly pruinose blue-gray abdomen is slender, especially the mid-segments, widened at end with a pair of rearward pointing twin pale triangles atop S7; the striped thorax top and sides are more noticeable in immatures, the abdomen turns darker pruinose as it matures

**female:** can become pruinose similar to male but often heavily patterned on the thorax and with a double line of dots atop the abdomen culminating in two rearward facing triangles on S7; darkened wash near wingtips

**similar species:** abdomen of **Dusky & Square-spotted Dashers** have square spots; **3-striped Dasher** has trapezoidal spots;

**Blue Dasher** lacks spots

**behavior:** female lands to oviposit, fastening eggs to the underside of a leaf

**habitat:** ponds, slow moving water

**Jalisco flight season:** flies all year

## Square-spotted Dasher (*Micrathyrus ocellata*)



**photos:** males and a female

**size:** medium, length 28-33 mm, wingspan 45-52 mm

**male:** white face; pale stripes on the thorax sides and front with a dark stripe extending down from the rear edge of the hindwing; abdomen is distinctly shorter than the hindwing, end of abdomen is expanded with paired spots that are more square-shaped than elongate, lacking notches, upper appendages are convergent

**female:** heavily patterned on the thorax and abdomen, with twin spots near an expanded abdomen tip

**similar species:** **Spot-tailed Dasher** - rearward pointed spots on tail; **Dusky Dasher** has pruinose thorax; **Caribbean Dasher** has abdomen longer than hindwing

**habitat:** ponds, slow moving water

**Jalisco flight season:** flies all year



## Three-striped Dasher (*Micrathyria didyma*)



**photos:** male and female

**size:** small/medium, length 33-37 mm, wingspan 52-67 mm

**male:** blue-green eyes; white face; swollen end of abdomen with white twin trapezoidal spots which are very narrowly separated; side of thorax has 3 parallel but uneven black and pale green stripes

**female:** like male but abdomen less clubbed at tip

**habitat:** ponds in the open; slow moving water

**Jalisco flight season:** flies all year



## Dusky Dasher (*Micrathyrja schumanni*)



**photos:** male and female

**size:** small, length 30-33 mm,  
wingspan 52-57 mm

**male:** like **Spot-tailed Dasher** but spots atop tail squared,  
not pointed at end, end of 'tail' black; frons metallic blue

**female:** an almost plain, brown abdomen with dark rings

**behavior:** perches on twigs and vegetation

**habitat:** ponds, slow moving waters,

**Jalisco flight season:** months 1,5-10,12 thus far





## Black Dasher (*Micrathyria atra*)



**photos:** male

**RARE in Jalisco** - please report any sightings

**size:** small, length ~32 mm, wingspan ~66 mm

**male:** white face, blue-green eyes; pruinose blue-gray on only S1-3 rest of abdomen is black and not expanded, spots atop S7 are rectangular; the thorax top is black and the sides are mildly marked

**female:** like male but with less intense coloration and dark wingtips

**similar species:** the **Dusky Dasher** is not black atop the thorax

**habitat:** ponds, slow moving water, especially with mangroves

**Jalisco flight season:** month 8 thus far

## Upland Dasher (*Micrathyria paulsoni*) **NEW species described 2020**



© Emmanuel Guevara Lazcano



Julio Álvarez

**photos:** male and female **RARE in Jalisco** - please report any sightings

**size:** medium, length 37 mm, wingspan ~56 mm

**male:** white face, blue-green eyes; two wide pale green stripes on sides of thorax, thorax top is black with thin pale stripes; pruinose blue-gray on only S1-3, S4&5 with small pale triangular marks on sides, S6 all black, spots atop S7 are rectangular

**female:** like male but top thoracic stripes a bit wider, abdomen with S3-5 with backwards pointing darts

**similar species:** **Black Dasher** has fewer marks on abdominal segments & other dashers are not black atop the thorax

**habitat:** upland ponds surrounded by forest, slow moving water

**Jalisco flight season:** month 6-9 thus far



© Emmanuel Guevara Lazcano



**"Yelapa" Dasher (*Microthyria cf ocellata*)**



**photos:** males

**RARE in Jalisco** - please report any sightings

**size:** small/medium, length ~29 mm, wingspan ~47 mm

**male:** similar to **Square-stopped Dasher** but the pale stripes on the thorax sides form a loop at the bottom; end of abdomen somewhat more expanded than other Dasher spp. and with square-shaped spots S7

**female:** TBD

**habitat:** Rio del Tuito & environs of Yelapa

**Jalisco flight season:** found in January & February

## Sierra Madre Sylph (*Macrothemis ultima*)



**photos:** male and female

**size:** small, length 36-39 mm, wingspan 53-68 mm

**male:** dark, patterned abdomen expanded near tip with paired elongate spots atop S8; blue eyes; mirror image “L’s” atop thorax; stripes on sides of thorax joined to form a loop at top; dark face; clear wings

**female:** like male but with dark amber wash at tip and at base of wings

**habitat:** moving water

**behavior:** hang perch on vegetation, often on spider lily leaves

**Jalisco flight season:** months 1-5,8,9,11 thus far





## Jade-striped Sylph (*Macrothemis inequiunguis*)



**photos:** male and female

**size:** small, length 32-36 mm, wingspan 50-62 mm

**male:** dark, patterned abdomen with expanded tip with paired oval spots atop S8; stripes on sides of thorax, dark face; wings have basal amber wash

**female:** like male but with dark wingtips

**habitat:** small rocky streams and rivers in the forest

**behavior:** hang perch on vegetation or atop leaves

**Jalisco flight season:** months 2,6-8 thus far



## White-tailed Sylph (*Macrothemis pseudimitans*)



© Dave Biggs

© Dave Biggs

© Dave Biggs

**photos:** males and female

**size:** medium, length 35-43 mm, wingspan 60-67 mm

**male:** dark species with dark "clubbed" tail which at maturity develops a large pruinose white area on S6-9; dark thorax has 2 pale blue triangular stripes on top and spots on sides; bright blue eyes; metallic blue frons

**female:** similar but darker brown color;  
abdomen not clubbed; wing tips clear

**behavior:** male flies short beats over the water landing occasionally on rocks in the stream or on sand near river banks

**habitat:** low moving water

**Jalisco flight season:** flies all year



## Delta-spotted Sylph (*Macrothemis hemichlora*)



© Dave Biggs

**photos:** males

**RARE in Jalisco** - please report any sightings

**size:** small/medium, 27-35 mm

**male:** blue eyes; pale, mirror-image triangles atop thorax; dark abdomen strongly patterned with pale spots & widely expanded near tip with large expanded paired tear-drop shaped spots atop segment 8;  
lower thoracic stripe shaped like the letter "r"

**female:** like male but with dark amber wash at tip and base of wings

**behavior:** often perches by clinging to leaf edges

**habitat:** streams

**Jalisco flight season:** months 2, 9 thus far



© Francisco Farriols Sarabia



## Slender Clubskimmer (*Brechmorhoga praecox*)



**photos:** males and female  
**size:** medium/large, length 47-53 mm, wingspan 72-74 mm  
**male:** slender, somewhat clubbed abdomen with paired pale yellow spots atop S7 that are spatulate in shape;  
wings with two rows of cells in the anal loop,  
brown at base of wings; aqua eyes  
**female:** like male but wings may be yellow or pale brown,  
always has brown at base of wing;  
abdomen not as clubbed  
behavior: hang perch  
**habitat:** moving waters of sandy rivers and streams **Jalisco**  
**flight season:** months 1-3, 6-8 thus far





## Vivacious Clubskimmer (*Brechmorhoga vivax*)



**photos:** male and female    **Rare in Jalisco** - please report any sightings

**size:** medium, length ~45 mm, wingspan ~72 mm

**male:** 2 continuous cell rows between the basal edge of the wing and the anal loop (the “boot”); S3 with green stripe on each side that does not come together with the sideways bottom green line

**female:** like male but less clubbed in appearance

**behavior:** hang perch

**similar species:** Slender Clubskimmer has 3 continuous cell rows between the basal edge of the wing and the anal loop (the “boot”);

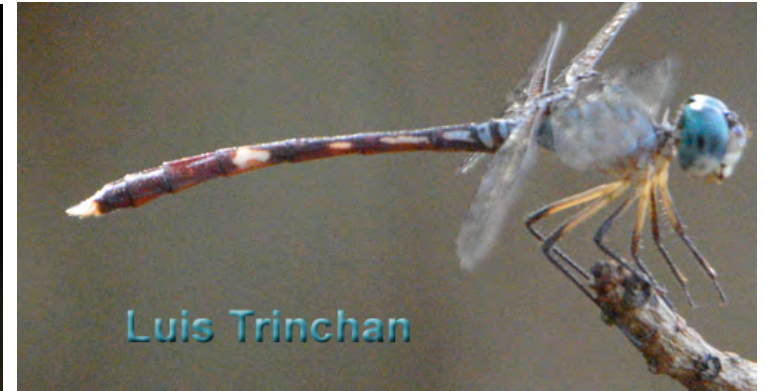
**habitat:** moving waters of sandy rivers and streams - found on the Horcones River below the Vallarta Botanical Gardens

**Jalisco flight season:** month 11 thus far

## Common Blue-eye (*Anatya guttata*)



© Doug Danforth



Luis Trinchán



Dennis Paulson

**photos:** males and female

**RARE in Jalisco** - please report all sightings

**size:** medium, length ~43 mm, wingspan 52 mm

**male:** blue eyes and thoracic marks; white face with dark spot; dark abdomen with pale blue marking on S1-3 and yellow on S4-9; appendages yellow; upper legs yellow and lower legs dark

**female:** like male but paler - more yellowish on thorax and abdomen

**behavior:** mostly perch in shade, can be found in sunlight

**habitat:** swampy ponds and still pools in forested streams

**Jalisco flight season:** months 10,11

**Note:** formerly *A. normalis*



## Straw-colored Sylph (*Macrothemis inacuta*)



**Photos:** male and female

**size:** medium, length 41-48 mm, wingspan 66-74 mm

**male:** distinctive, very slender cylindrical yellowish-brown abdomen; white slashes on top and sides of thorax; pearly blue eyes

**female:** similar; sometimes amber tint to forewing tips and/or at hindwing base; pale legs with dark "knees and feet"

**behavior:** hang perch

**habitat:** slow moving water; sometimes ponds

**Jalisco flight season:** months 1, 2, 4-12 thus far

## Evening Skimmer (*Tholymis citrina*)



Rick Hoyer



Francisco Farriols Sarabia

**photos:** male and female

**RARE in Jalisco** - please report all sightings **size:** medium/large,  
length 48-53 mm, wingspan ~ 75 mm

**male:** steel-blue eyes; long tapered pale brown body; clear wings with pale amber nodal patch on hind wing; long straight upper appendages

**female:** like male but with appendages spreading; both sexes have an "open-toed" anal loop in the hindwing

**behavior:** crepuscular; hang perches

**habitat:** shallow ponds and marshes

**Jalisco flight season:** months 5 & 6 thus far



## Black-winged Dragonlet (*Erythrodiplax funerea*)



© Julio Alvarez



<-- non-typical male with clear area at base of wings is fairly common in parts of Jalisco

**photos:** mature male and female; atypical male  
**size:** medium, length 38-42 mm, wingspan 52-70 mm  
**male:** slender and black; wings black from near base to halfway between nodus and stigma (does not touch stigma), wings can be clear at base; immature has yellow on S1-7, similar to female  
**female:** spotted form - slender black body with round black spot at hind wing base,  
other form - tan/brown; with front of thorax darker than the sides; dark wingtips  
**habitat:** ponds in the open; slow moving water  
**Jalisco flight season:** flies all year

**Note:** Band-winged Dragonlet *E. umbrata* not expected in Jalisco



© Dave Biggs



## Filigree Skimmer (*Pseudoleon superbus*)



**photo:** male and female

**size:** medium, length 38-45 mm, wingspan 63-73 mm

**male:** wings variably dark and lacy, sometimes almost all dark, but tips mostly clear; brown body with pale chevrons ages to nearly all black; eyes are striped and when mature are nearly all black

**female:** lace pattern on wings more open; spout-like ovipositor

**behavior:** perch low, often on rocks/debris/sandbars, often in oblique posture; at a distance can look just like a dry leaf!

**habitat:** ponds; rocky areas of rivers with slow moving water

**Jalisco flight season:** flies all year





## Desert Whitetail (*Plathemis subornata*)



**photos:** male and female

**RARE in Jalisco** - please report any sightings

**size:** medium, length 40-52 mm, wingspan 64-76 mm

**male:** pruinose white abdomen; wings with 2 narrow zigzag black bands, middle third usually fills in dark, basal half of wings have extensive white pruinosity; dark appendages

**female:** brown body with paired yellow oblong spots; 2 pale, jagged thoracic stripes; each wing has dual zigzag bands, clear wing tips

**similar species:** **Common Whitetail** not found in Jalisco, has much less white in wings

**habitat:** desert springs, ponds, lakes

**Jalisco flight season:** months TBD

## Hoary Skimmer (*Libellula nodisticta*)



**photos:** male and female **Rare in Jalisco** - please report all sightings

**size:** medium/large, length 46-52 mm, wingspan 76-82 mm

**male:** thorax and abdomen pruinose blue-gray; thorax of immature has 2 broken yellow stripes; wings have small dark area at base and at nodus, basal dark wing area becomes surrounded by white, black stigma; no other white on wings

**female:** dark gray/brown with row of yellow dashes along abdomen side; when mature can turn pruinose like male

**similar species:** **Twelve-spotted Skimmers** have dark wingtips; not found in Jalisco

**habitat:** springs; spring-fed streams

**Jalisco flight season:** TBD



## Gray-waisted Skimmer (*Cannaphila insularis*)



© Carlos G Velazco-Macias



Juan Cruzado Cortés



Liam O'Brien

**photos:** male, immature and mature females **RARE in Jalisco** - please report any sightings

**size:** medium, length 37-44 mm, wingspan 62-65 mm

**male:** wings narrower than in most Skimmers, lacking any color; abdomen dark with gray-blue pruinosity developing on S2-3; face is pale with dark eyes and top of frons

**female:** like immature male with brown and yellow coloration but with noticeable flange used for ovipositing; dark wingtips; can become all dark with gray pruinosity

**habitat:** marshy ponds, lakes and streams

**Jalisco flight season:** months 2,7-9 thus far

**Note:** original link to male on iNaturalist - <https://www.inaturalist.org/observations/6937121>

## Part II—Spiketails (Cordulegasteridae)

—1 genera/species documented in Jalisco.

All Spiketails have long abdomens and yellow and black patterning.

=!= =!= =!= =!= =!=

### Apache Spiketail (*Cordulegaster diadema*)



© Doug Danforth



© Pierre Deviche

**photos: male and a female ovipositing** **RARE in Jalisco** - please report any sightings

**size:** very large, length 74-88mm, wingspan 89-109 mm

**male:** very dark appearance; narrowly separated tear-shaped aqua-blue eyes are yellow-green in juveniles; dark abdomen is banded rather than spotted with segments 6-8 moderately expanded, there is a thin half-ring between the bands

**female:** similar to male; long abdomen with a spike-like ovipositor

**behavior:** hang perches; copulation in trees can take 2 hours; females oviposit with downward vertical thrusts into sand at edge of waterway

**habitat:** small mountain streams with silt-bottom pools

**Jalisco flight season:** months 9,10,12 thus far



## Part III—River Cruisers (Macromia)

—1 genera/species documented in Jalisco.

All River Cruisers have long abdomens and yellow and black patterning.

=!= =!= =!= =!= =!=

### Western River Cruiser (*Macromia magnifica*)



**photos:** live scans of a male and a female **RARE in Jalisco** - please report any sightings

**size:** large, length 68-74 mm, wingspan 86-100 mm

**male:** the abdomen is black with yellow markings; pale face; pearly gray eyes touch each other; dark thorax has single yellow side stripe; only half-length stripe on top of thorax; slightly clubbed abdomen has squared yellow spots top, segment 8 spot largest; very long legs

**female:** similar to male; but not clubbed

**behavior:** perch by hanging; males patrol along river shoreline with the abdomen slightly arched, usually less than a yard above the water.

**habitat:** streams and rivers in lowlands; found only in Rio Mascota, Mascota municipality so far.

**Jalisco flight season:** month 11 thus far

## Part IV—Clubtails (Gomphidae)

—19 species documented in Jalisco.

=!= != != != !=

### Quick Guide to the Clubtails—7 genera

All Clubtails have widely separated eyes, clear wings, and often a clubbed abdomen.

The males usually perch on rocks and sandbars.

Most are found on moving water.

The three most common genera:

#### Sanddragons

##### *Progomphus*

Medium-sized, thin abdomen without large "clubs", found on sandy or gravelly creeks and rivers



#### Leaftails

##### *Phyllogomphoides*

Large-sized, dark with long abdomens with leaf-like flanges near abdomen tip, often perch on vegetation



#### Ringtails

##### *Erpetogomphus*

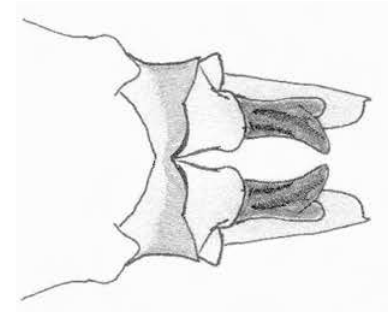
Moderate-sized, green thorax, pale rings on abdominal segments; perch on rocks, sandbars



**Note:** Not all clubtail species' information or images available at this time.



## Zebra-striped Sanddragon (*Progomphus clendoni*)



©Enrique González Soriano

**photos:** male and female; male appendages from below  
**size:** medium/large, 46-52 mm

**male:** dark thorax sides have pale yellow stripes, top stripes form a disjointed "W"; abdomen S1-7 very narrow, expanded at tip, club of S8-10 black & preceded by thick yellow ring, pale yellow rings on middle abdomen segments; appendage tops smooth & yellow, lower appendages forked; blue-gray eyes, yellow face with dark markings

**female:** patterned like male; small top point on S1; appendages white; wings slightly yellowed

**behavior:** males perch on sandbars and rocks

**habitat:** moving water with sandy and rocky areas **Jalisco**

**flight season:** months 1-4,6-9,11,12 thus far



## Mexican Sanddragon (*Progomphus mexicanus*)



©Enrique González Soriano

@Dennis Paulson

**photo:** scan of male and drawing of appendages

**size:** medium, length ~51 mm

**male:** green on thorax and yellow on the abdomen; wings slightly amber-tinted; appendages only yellow at the extreme tip and unforked; middle thoracic stripe interrupted

**female:** TBD

**behavior:** males perch on sandbars and rocks

**habitat:** moving water with sandy and rocky areas

**Jalisco flight season:** months 1,6-8,11,12 thus far



## "Yelapa" Sanddragon (*Progomphus* cf. *mexicanus*)



**photos:** males and appendages

**size:** medium, TBD mm

**rare in Jalisco**, please report all sightings

**male:** wings slightly amber-tinted; appendages only yellow at the extreme tip and unforked; middle thoracic side stripe interrupted

**female:** TBD

**behavior:** males perch on sandbars and rocks

**habitat:** moving water with sandy and rocky areas

**Jalisco flight season:** months 1,11,thus far

**Note:** this represents an undescribed species;  
recorded twice in Yelapa in different years  
by different individuals in town and near the Yacht Club



## Gray Sanddragon (*Progomphus borealis*)



**photos:** male and pair in mating wheel

**RARE in Jalisco** - please report any sightings

**size:** large, length 56 - 62 mm, wingspan 66 - 72 mm

**male:** yellow face; thorax sides have large gray patches; dull pale yellow triangles top of very thin black abdomen; costa yellow; upper appendages yellow, lowers dark, like the **Common Sanddragon**; both arch abdomen when perching

**female:** very similar to male but lacks club, abdomen more cylindrical

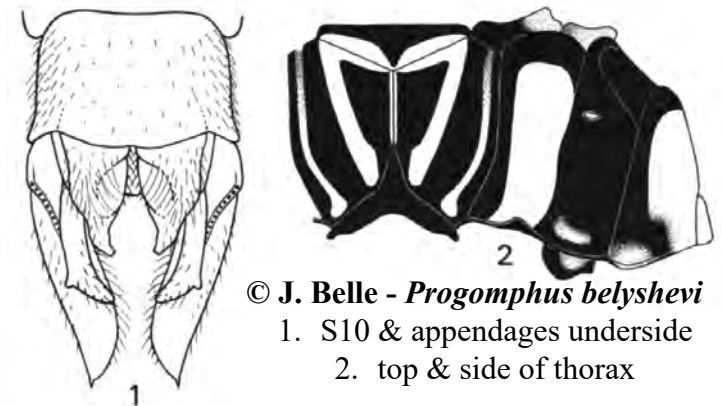
**behavior:** males perch on sandbars and rocks

**habitat:** sandy rivers, lakes

**Jalisco flight season:** months TBD



## Belyshev's Sanddragon (*Progomphus belyshevi*)



**photos:** undescribed species, cf. *Progomphus belyshevi* - the assumption that **Belyshev's** would be similar; drawings of appendages and thorax

**RARE in Jalisco**, please report all sightings

**size:** large, length 55-56 mm, wingspan ~66

**male:** much like the **Gray Sanddragon** with dark and gray areas on the thorax sides, sides of the thorax darker with a smaller amount of gray, middle wide dark stripe, which is joined with the femoral stripe; appendages more narrow than in **Gray Sanddragon**

**female:** like male but slightly larger

**habitat:** assumed to be sandy rivers, lakes

**Jalisco flight season:** month 8 thus far

## Broad-striped Forceptail (*Aphylla angustifolia*)



© Vincent Vander Heijden



© Yesenia Vega

**photos:** mature male and immature male

**size:** large, length 62-68 mm, wingspread 74-82mm

**male:** 3 pale stripes on side of thorax with the middle stripe narrower; abdomen narrow with a flange on S8 (males and females)

**female:** very similar but abdomen more cylindrical, club narrower

**habitat:** lakes, ponds and pools of intermittent streams with muddy bottoms

**Jalisco flight season:** months 6, 8, 10 thus far



## Narrow-striped Forceptail (*Aphylla protracta*)



**photos:** male and female

**size:** large, length 64-66 mm

**male:** flanged abdomen mostly russet-colored; thorax brown with narrow pale stripes; lower appendage unnoticeable; blue eyes

**female:** like male

**habitat:** lakes, ponds and pools of intermittent streams with muddy bottoms

**Jalisco flight season:** months 1, 5-11 thus far



## Angle-tipped Forceptail (*Phyllocycla elongata*)



**photos:** male and female

**RARE in Jalisco** - please report any sightings

**size:** large, length ~55 mm

**male:** 4 pale stripes on thorax sides; abdomen thin and black with all dark club & appendages,  
each segment's ring twice size of preceding ring

**female:** abdomen more cylindrical, pale area reduced; no club, pale under S9&10

**habitat:** streams with deep pools

**Jalisco flight season:** months 8-12

**Note:** *Phyllocycla breviphylla* may be a synonym of *Phyllocycla elongata*.; female above labeled *P. breviphylla* on iNaturalist



## Two-striped Leaftail (*Phyllogomphoides bifasciatus*)



32 *P. bifasciatus*

Plazi Treatment Bank



© Dennis Paulson

**photos:** male, appendages and female

**size:** large, length 57 mm

**male:** only two stripes on sides of thorax with no hint of any other markings; pale face with dark cross stripes, pale blue eyes; middle abdominal segments have rings open at top, S7/8 with broad complete ring, club widely flanged ("leaf-like"), appendages pale with dark edges

**female:** less colorful; abdomen more cylindrical; lacks club

**habitat:** small streams in semi-forested areas to larger streams and small rivers with pools

**Jalisco flight season:** months 9-11 thus far



© Dennis Paulson



## West Mexican Leaftail (*Phyllogomphoides nayaritensis*)



**photos:** males and appendages

**size:** large, length 60-68 mm

**male:** dark thorax with mirror image "L" on top, slight yellowish cast to the 2 stripes on side, small middle stripe; pale face with dark cross stripes, pale blue eyes; middle abdominal segments have rings open at top, S7/8 with broad complete ring, club widely flanged ("leaf-like"), appendages pale with dark edges

**female:** like male but without the widened flanges;

the larva is unknown

**habitat:** rocky and muddy rivers with moderately swift current

**Jalisco flight season:** months 7,9,11,12 thus far



## Pacific Leaftail (*Phyllogomphoides pacificus*)



**photos:** males

**size:** large/very large, length 65-67 mm

**male:** blue eyes widely separated; sprawling legs; well camouflaged; 5 parallel & entire bluish-white thoracic stripes; incomplete abdominal rings prior to S7

**female:** less colorful; abdomen more cylindrical

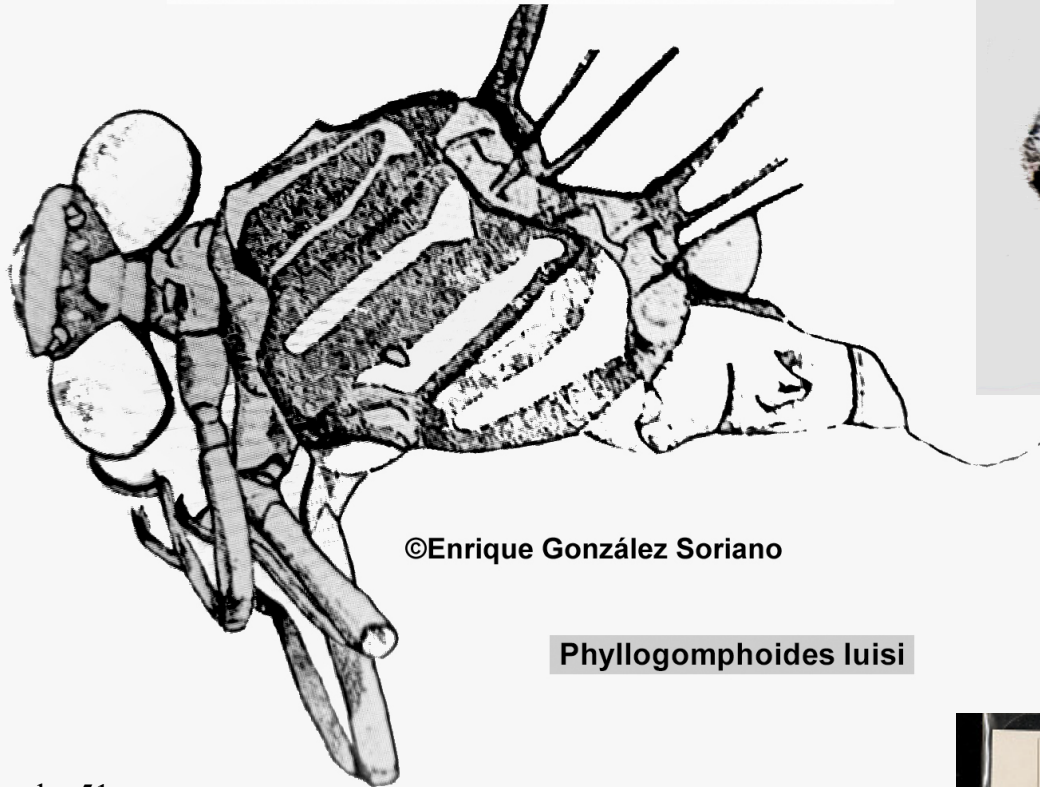
**habitat:** streams with deep pools

**Jalisco flight season:** months 6-12 thus far



## Luis's Leaf-tail (*Phyllogomphoides luisi*)

Dos Nuevas Especies de Phyllogomphoides Belle 1970 (Odonata: Gomphidae)  
del Estado de Morelos, Mexico



©Enrique González Soriano

**Phyllogomphoides luisi**

**size:** length ~51 mm

**male:** very similar to *P. pacificus*; thorax with 5 olive green stripes; abdominal segments 1 & 2 are yellow on top, 3-6 have pale bands, 2/3 of 7 is yellow, 8 has diffuse side spots, 9 & 10 are black; appendages are black

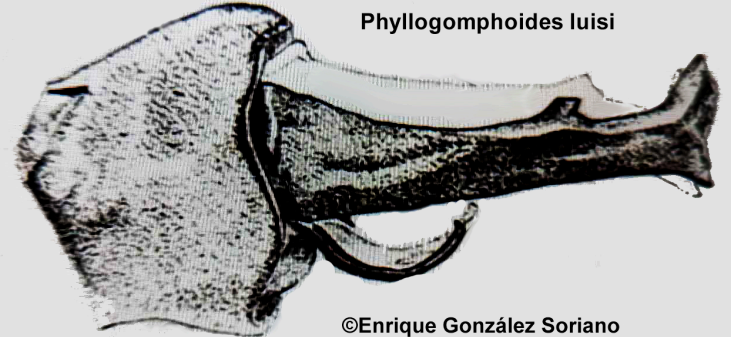
**female:** like male with the appendages being yellow with some dark at basal area

**Jalisco flight season:** months 8,9,10

**Note:** added to Jalisco species list 2024

**habitat:** TBD

**Phyllogomphoides luisi**



©Enrique González Soriano

Dos Nuevas Especies de Phyllogomphoides Belle 1970 (Odonata: Gomphidae)  
del Estado de Morelos, Mexico

**photos:** a dead specimen of  
*Phyllogomphoides luisi*  
and  
drawings by  
Enrique González Soriano  
who described the species  
**RARE in Jalisco** -  
please report any sightings

PHYLLOGOMPHOIDES LUISI Gonzalez & Novelo 1990  
det. E. González 1991

MEXICO: Morelos; Cuernavaca  
19 July 1961  
R. & K. Dreisbach, leg



Montgomery-Purdue Coll.  
Collection U.S. National Museum



## Yellow-legged Ringtail (*Erpetogomphus crotalinus*)



**photos:** male and female

**RARE in Jalisco** - please report all sightings

**size:** medium, length 45-49 mm, wingspan 60-72 mm

**male:** yellow-green thorax lacks any dark striping;  
abdomen yellow with indistinct black rings,  
medium-sized club, yellow appendages;  
wings with yellow costa on both sexes

**female:** like male but abdomen more cylindrical,  
S1-2 mostly green, lacks club

**behavior:** males perch on rocks, sandbars and on branches  
overhanging streams

**habitat:** moving water with riffles in the sunshine **Jalisco**

**flight season:** months 7-9,11 thus far



## One-striped Ringtail (*Erpetogomphus bothrops*)



**photos:** male and female

**size:** medium, 38-47 mm

**male:** thorax green with one dark stripe; green face with blue eyes; tip of narrow ringed abdomen is expanded with some yellow on the underside

**female:** thorax like male's; abdomen more cylindrical, lacks club; shows rings at abdominal segments

**behavior:** males perch on rocks, sandbars and on branches overhanging streams

**habitat:** moving water

**Jalisco flight season:** months 9-12 thus far





## Straight-tipped Ringtail (*Erpetogomphus elaps*)



**photos:** male and female

**RARE in Jalisco** - please report any sightings

**size:** medium, length 39-49 mm; wingspan 50-62 mm

**male:** green thorax, top thoracic stripe dark, wide and short; no true side stripe; abdomen mostly dark with pale rings on S4-6, S7 with wider pale area, the top of club dark; straight blunt appendages pale; lower appendages curved to meet straight upper appendages at midpoint

**female:** like male; abdomen more cylindrical, lacks club

**behavior:** males perch on rocks, sandbars and on branches overhanging streams

**habitat:** moving water

**Jalisco flight season:** months 7-11 thus far





## Boa Ringtail (*Erpetogomphus boa*)



**photos:** male and scanned male (dead) with appendages enlarged

**RARE in Jalisco** - please report any sightings

**size:** medium, length 49-53 mm, wingspan ~70 mm

**male:** blue eyes; apple to blue-green thorax with wide black 'shoulder' stripe; abdomen dark with green arrow-like marks atop S1-5, S6 with a green ring, S-9 dark on top, S10 yellow; thick bristles on upper last half of the cerci is characteristic (need to have in-hand)

**female:** coloration as in male, but with pale areas on abdomen and legs more extensive

**similar species:** Plateau Ringtail's cerci lack the bristles

**habitat:** moving water

**Jalisco flight season:** month 7 thus far



## Plateau Ringtail (*Erpetogomphus sipedon*)



**photos:** male and appendages, and females

**RARE in Jalisco** - please report any sightings

**size:** medium, length ~41 mm, wingspan ~66 mm

**male:** blue eyes, green thorax, slender dark abdomen with thin yellow rings; appendages yellow and lack bristles on upper half

**female:** abdomen more cylindrical, lacks club; eyes more gray

**behavior:** males perch on rocks, sandbars  
and on branches overhanging streams

**habitat:** moving water

**Jalisco flight season:** months 6,7 thus far



## Aztec Clubtail (*Stylurus falcatus*)

*Stylurus falcatus*, new species, type male, Plate I (from A NEW SPECIES OF  
STYLURUS FROM MEXICO (ODONATA : GOMPHINAE)  
by Leanora K. Gloyd) 1944



FIG. 1. Abdominal  
appendages in view from  
above



FIG. 2 Abdominal  
appendages in view  
from below

FIG.3. Abdominal appendages and segments 7-10 in side view -->



FIG. 4. Ventral part of second abdominal segment  
(right side) in side view showing hamules and  
other structures

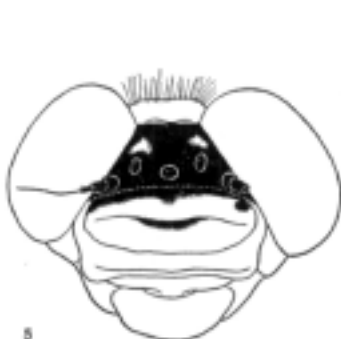


FIG. 5. Head, front view



FIG. 6. Color pattern of the top and side of the thorax

Photo of this species not available, below is a scan of this species



© Dennis Paulson

**photos:** none accessible, see male scan above **RARE in Jalisco**  
- please report any sightings

**size:** medium, length more than 32 mm, wingspan ~60 mm

**male:** description at link below; (see Pl. I, Figs. 1-6 to the left;  
very dark brown, almost black abdomen  
with only a slight "club" on S8-9

[https://deepblue.lib.umich.edu/bitstream/handle/2027.42/56920/  
OP482.pdf;sequence=1](https://deepblue.lib.umich.edu/bitstream/handle/2027.42/56920/OP482.pdf;sequence=1)

**female:** patterned like the male

**habitat:** Lago de Chapala

**Jalisco flight season:** month 8 thus far



## Tehuantepec Knobtail (*Epigomphus crepidus*)



Dr Fernando Flores F.

**photo:** male & drawings of appendages and thorax of both sexes

**RARE in Jalisco** - please report any sightings

**size:** medium, length ~43-55 mm wingspread ~70 mm

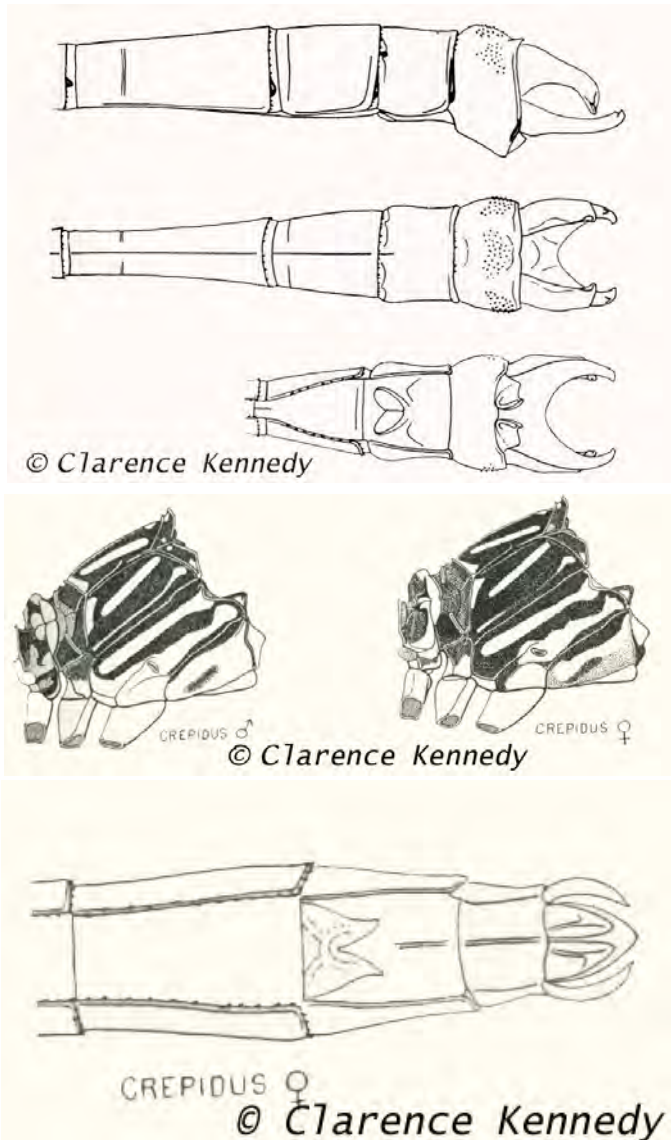
**male:** knob-like appearance to "club" & appendages; dark-brownish with pale yellow or olive green stripes on the head and thorax; abdomen S1&2 olive, S3 1/3 black with top ridge yellow, S4-6 similar but with black on each, S7 2/3 yellow,

S8-10 dark, appendages dark

**female:** similar to male but markings not as well defined and without knob at end of tail

**habitat:** lowland moist forests and rivers

**Jalisco flight season:** month 3 thus far



sketches by Clarence Kennedy from *Annals of the Entomological Society of America*, Volume 29, Issue 1, 1 March 1936, Pages 126-135, <https://doi.org/10.1093/aesa/29.1.126>

## Part V—Darners (Aeshnidae)

—17 species that have been documented in Jalisco.

=! =! =! =! =! =!

### Quick Guide to the Darners—6 genera

Darners have eyes that touch broadly and patterned abdomens.  
They seldom perch, but when they do they hang perch on vegetation.  
The 3 most common:

#### Pilot & Malachite Darners

*Coryphaeschna &  
Remartinia*

Long slender abdomens



#### Green Darners

*Anax*

Bulky, large broadly  
touching eyes, solid green  
thorax



#### Two-spined Darners

*Gynacantha*

Crepuscular, hang-perch in  
deep shade during the  
daylight. Females have  
two spines on the  
underside of S10





## Common Green Darner (*Anax junius*)



**photo:** tandem pair with male-colored female ovipositing; non-male-like female

**size:** very large, 63-84 mm, wingspan 92-103 mm

**male:** more solidly colored than most other Darners; green eyes and yellow-green face, bull's eye mark top of face; solid green thorax; electric blue abdomen with wide dark stripe on top; wings can be clear or show yellowish tinge

**female:** most are purplish brown with green; rarer form colored like male; eyes remain brown with yellow back border; wings often yellowish tinged

**behavior:** tandem & solo ovipositing; abdomen carried straight in flight; swarms; migrates, often as immatures

**habitat:** ponds, fields and waterways

**Jalisco flight season:** months 3, 6-12 thus far

## Giant Darner (*Anax walsinghami*) **NEW 2022**



**photo:** male in flight and tandem pair **RARE in Jalisco** - please report any sightings

**size:** huge, male 99 - 111 mm, wingspan 115 - 135 mm

**male:** largest dragonfly in North America; coloring like **Common Green Darner** but very long thin blue and dark patterned abdomen; solid green thorax; eyes blue on top, yellow rimmed

**female:** like male; smaller but still very long narrow abdomen, 88 - 99 mm, wingspan 112 - 122 mm; less blue

**similar species:** **Common Green Darner** carries abdomen straight in flight; eyes green

**behavior:** tandem & solo ovipositing; abdomen carried arched in flight

**habitat:** canyon and spring-fed streams, marshes, lakes in arid areas. In Jalisco, mating pair were found in November at first crossing of Rio de Tuito and at the Rio de Tuito waterfall

Jalisco flight season: months 1, 4, 11 & 12 thus far



## Amazon Darner (*Anax amazili*)



**photo:** male and female

**size:** very large, 70-75 mm, wingspan ~104 mm

**male:** bull's eye mark on top of frons, eyes brown-gray; solid green thorax, abdomen patterned with white spots, S1-2 pale green stripes, other segments appear patterned with wide, white spots

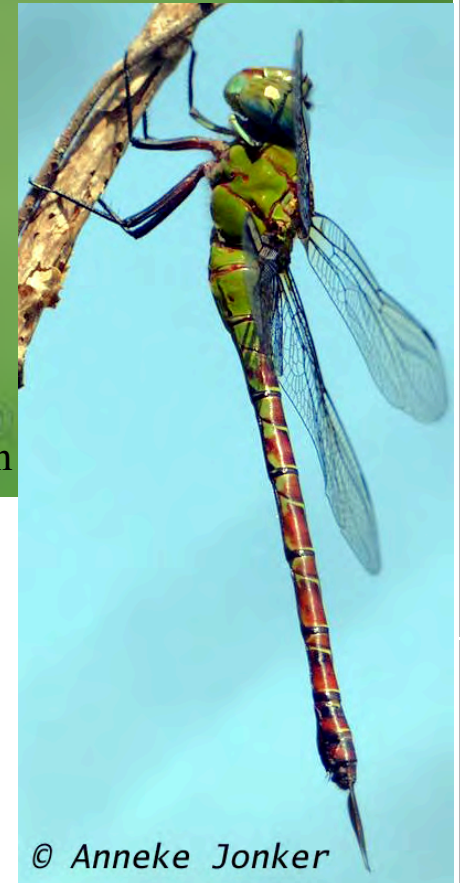
**female:** similar to male but lacks stripes on S2, otherwise more boldly patterned

**behavior:** males less often seen than females

**habitat:** overgrown weedy ponds

**Jalisco flight season:** months 6-10 thus far

## Blue-faced Darner (*Coryphaeschna adnexa*)



**photos:** males and a female

**size:** large/very large length 66-69 mm, wingspan 88-108 mm

**male:** bright blue face and eyes; green thorax with thin dark stripe lacks small dark spots on each side; dark brown abdomen with thin green rings; appendages lack spine

**female:** like male but with broader abdomen; wings can have an amber tint; eyes show blue; appendages tend to break off

**habitat:** ponds, usually covered with floating vegetation such as water lettuce, water hyacinth or duckweeds **Jalisco flight season:** months 2, 4, 6, 7, 9-12 thus far



## Mangrove Darner (*Coryphaeschna viriditas*)



**photos:** male and female

**size:** very large, length 76-85 mm, wingspan 102-120 mm

**male:** green face with black T-spot on frons; green thorax with narrow brown stripes and a small dark spot each side; abdomen streaked with green and brown **female:** like male but with broader abdomen

**habitat:** mangrove marshes

**Jalisco flight season:** months 1, 6, 10 thus far

## Fiery Darner (*Coryphaeschna diapyra*)



**photos:** male and female

**size:** very large, length ~75 mm, wingspan ~100 mm

**male:** green thorax with reddish abdomen, long appendages

**female:** like male but with brown eyes; wings can turn brown with maturity

**habitat:** ponds and marshes

**Jalisco flight season:** months 7, 8, 11 thus far



## Pale-green Darner (*Triacanthagyna septima*)



**photos:** male and female

**RARE in Jalisco** - please report any sightings

**size:** large, length 59-66 mm

**male:** pale green thorax, pale yellow legs; eyes bluish-green; thin brown abdomen with green rings; long appendages

**female:** very similar in coloration to male but has greenish-brown eyes; long, slender appendages; T-spot lacks a stem

**behavior:** hang from a twig or vine with abdomen almost vertical;  
crepuscular feeders, roost within the jungle; come out to feed at jungle edge at dusk

**habitat:** breed in jungle rain pools

**Jalisco flight season:** months 5-7, 10, 11 thus far

## Caribbean Darner (*Triacanthagyna caribbea*)



**photos:** male and female

**RARE in Jalisco** - please report any sightings

**size:** medium, length ~ 63 mm

**male:** green thorax striped with black; tip of abdomen pale green

**female:** very similar in coloration to male but with wider body

**behavior:** hang perch; crepuscular

**habitat:** tropical forests

**Jalisco flight season:** months 6-9 thus far



## Malachite Darner (*Remartinia luteipennis*)



**photos:** male and pair in mating wheel

**size:** very large, 76-80 mm, wingspan 92-102 mm

**male:** wide green stripes sides and top of thorax, pale thoracic stripes wider than brown stripes; abdomen brown with S1-2 mostly green, thin green marks rest of abdomen

**female:** like male but eyes and face blue with very short appendages; wings become brown with maturity

**behavior:** males fly at waist to above head level, hovering now and then

**habitat:** ponds and streams with marshy edges

**Jalisco flight season:** months 4-11 thus far



## Secretive Darner (*Remartinia secreta*)



© Tripp Davenport



© Veronik Moon

**photos:** males

**size:** very large, 78-80 mm, wingspan 92-100 mm

**male:** like Malachite Darner but with the brown stripes as wide as, or wider, than green stripes

**female:** unlike male almost unmarked pale yellow-green thorax; abdomen patterned with very short appendages; wings become brown with maturity

**behavior:** secretive

**habitat:** small pools in fern swamps; unlikely to be in the highlands

**Jalisco flight season:** months 7-10 thus far



## Turquoise-tipped Darner (*Rhionaeschna psilus*)



**behavior:** abdomen carried straight in flight; swarms; migrates

**habitat:** ponds, ditches and sluggish streams

**Jalisco flight season:** flies all year

**photos:** males

**size:** large, 56-61 mm

**male:** patterned slender dark abdomen; S9-10 blue on the underside, S10 has paired spots connected by a bar; wide sinuous green thoracic stripes; long slender appendages; inconspicuous bump under first segment

**female:** thorax similarly marked to male; inconspicuous bump under first segment; spots on abdomen are small and green colored, S10 has paired spots connected by a bar; long appendages





## Black-tailed Darner (*Rhionaeschna jalapensis*) **NEW 2021**



**photos:** male

**RARE in Jalisco** - please report any sightings

**size:** large, 68 mm

**male:** fewer pale spots atop abdomen than other *Rhionaeschna*;

stripes on thorax thin; dark line across face, blue eyes;

appendages forked in side view;

inconspicuous bump under first segment

**female:** thorax similarly marked to male; inconspicuous bump under first segment

**behavior:** females may submerge abdomen when ovipositing

**habitat:** small to medium ponds

**Jalisco flight season:** months 3, 12 thus far



## Blue-eyed Darner (*Rhionaeschna multicolor*)

© Alvaro Xicohtencatl Hernandez



**photos:** male and female

**size:** large, 65-69 mm, wingspan 89-92 mm

**male:** bright blue eyes; pale line across face; blue stripes on front and sides of thorax, inconspicuous bump under first segment; abdomen mosaic patterned; appendages shaped like a wrench when seen from the side

**female:** thorax similarly marked to male; inconspicuous bump under first segment; colored as male or in greens and browns

**behavior:** abdomen carried straight in flight; swarms; migrates; hang perch

**habitat:** ponds, ditches and sluggish streams

**Jalisco flight season:** months 2, 3, 5-12 thus far



## Ditzler's Darner (*Triacanthagyna ditzleri*)



© Robert D Stevenson

**photos:** male and female

**RARE in Jalisco** - please report any sightings

**size:** relatively small, length ~59 mm

**male:** dark brown thorax with green stripes on side wider than the brown background, middle of 3 stripes narrower, stripes atop thorax;  
dark brown abdomen with small pale green markings; long appendages

**female:** very similar in coloration to male; 3 prominent spines under S10;  
long appendages

**behavior:** hang perch; crepuscular

**habitat:** tropical forests

**Jalisco flight season:** month 8 thus far



© Terry Carr



## Bar-sided Darner (*Gynacantha mexicana*)



© Juan Pablo Gonzalez

**photos:** male and female  
**RARE in Jalisco** - please report sightings  
**size:** large, length 70-76 mm,  
wingspan 92-102 mm



**male:** mostly brown with pale green markings; brown or green eyes; thorax green with a dark green stripe at back end; usually with a dark brown stripe in the wings

**female:** very similar in coloration to male; appendages longer than S9&10

**similar species:** **Twilight Darner** appendage more than half the length of the uppers

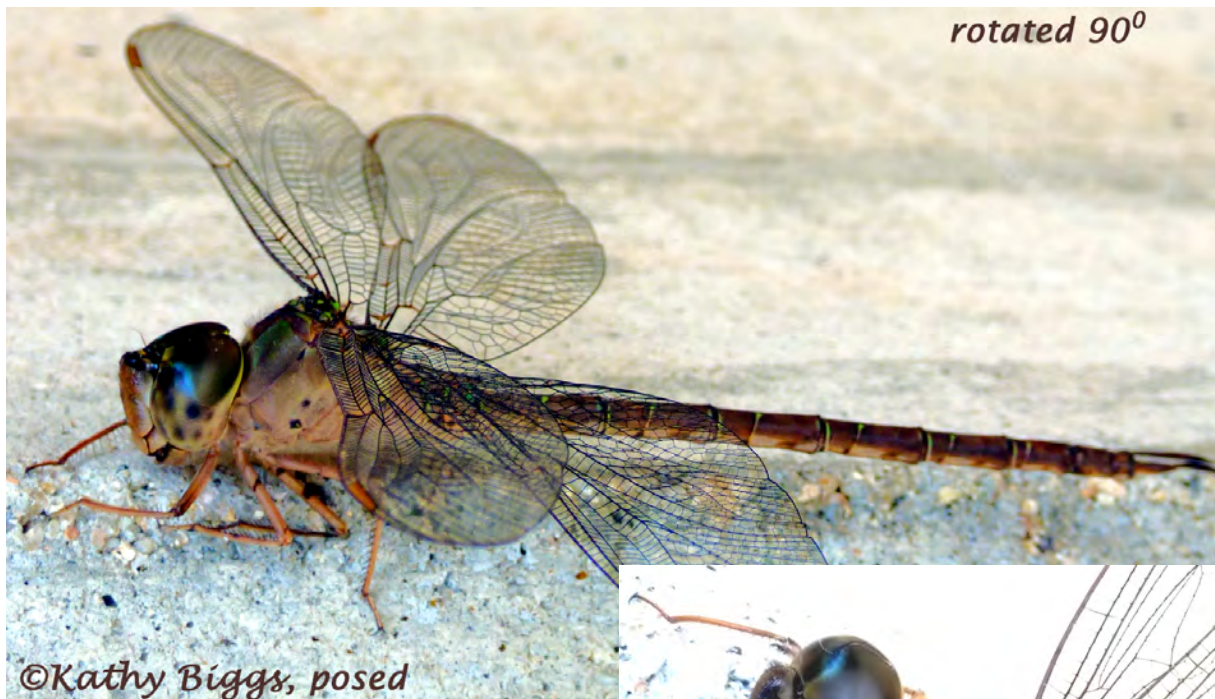
**behavior:** crepuscular (sunrise and sunset)

**habitat:** ephemeral pools and ponds

**Jalisco flight season:** months TBD



## Twilight Darner (*Gynacantha nervosa*)



**photos:** male (posed) and female (in-hand)

**size:** very large, 75-81 mm

**male:** tan thorax with 2 dark dots on sides;  
slender abdomen with thin light green rings

**female:** similar to male but with two spines on  
underside of abdomen S10; T-spot has spine

**similar species:** **Bar-sided Darner** has lower  
appendage less than half length of the uppers

**behavior:** swarm at twilight (corpuscular),  
does not fly during the daytime;  
eggs laid in tree holes

**habitat:** ponds, ditches and sluggish streams

**Jalisco flight season:** months 1-3, 6, 9-12  
thus far



## Helen's Darner (*Gynacantha helenga*)



**photo:** males (mature and immature)

**RARE in Jalisco** - please report any sightings

**size:** relatively small, length TBD

**male:** bright yellow appendages and tip of S10; abdomen is brown with yellow-green markings that grow smaller on each segment, S1-2 have blue on them;

thorax green with brown stripes

**female:** like male; pale stigma

**behavior:** crepuscular, perch by hanging from a twig, vine or leaf

**habitat:** forest clearings

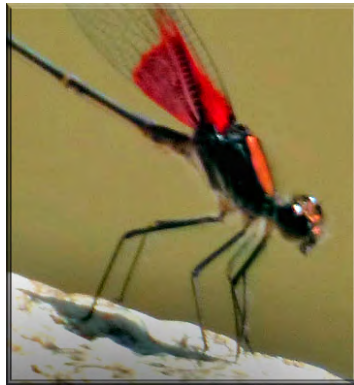
**Jalisco flight season:** months 1, 4, 6-11

## SUBORDER II: DAMSELFLIES (ZYGOPTERA)

Damselflies have widely separated eyes and long thin bodies.  
Most hold their wings closed above or alongside the abdomen.

**5 of Mexico's 8 families of damselflies have been recorded in Jalisco**  
(several families have recently been merged into Pond/Narrow-winged Damsels)

### VI. Jewelwings



**Jewelwings**  
(Calopterygidae)

- 1 genus in Jalisco

All have red at the base of their wings and long legs

### VII. Pond Damsels

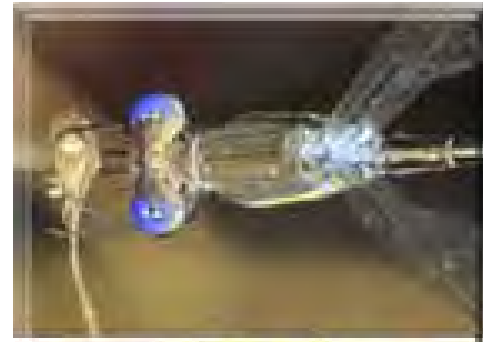


**Pond Damsels**  
(Coenagrionidae)

- 12 genera in Jalisco

Very common, variable and colorful; wings are held closed, above the abdomen

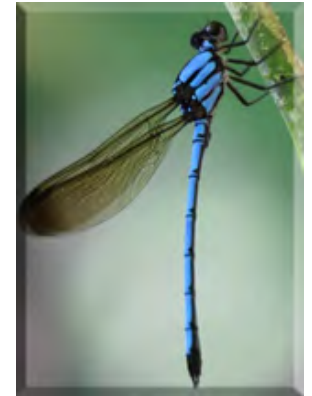
### VIII. Spreadwings IX. Other families



**Spreadwings**  
(Lestidae)

- 2 genera in Jalisco

They perch with their wings spread delta-like to their sides; blue eyes



**Other Families:**  
**Shadowdamsels**  
(Platystictidae)

- 1 genus in Jalisco

**Bannerwings**  
(Polythoridae)

- 1 genus in Jalisco



## Part VII: Jewelwings (Calopterygidae)

—7 species have been documented in Jalisco.

=!=!=!=!=!=

Only one genus has been recorded in Jalisco/Mexico

All the males and some of the females in this genus have red in the basal area of their wings, some have additional coloration at the wing-tip



## American Rubyspot (*Hetaerina americana*)



**photos:** male and female

**size:** medium/large, length 40-51 mm

**male:** 1/3 to 1/2 basal area of wings ruby red, tips mostly clear; thorax top blood red, pale side stripes; abdomen bronze-brown-green with thin rings; pale stigma on wing (occasionally missing); tan on underside of abdomen

**female:** less colorful; wings usually with orange streak on leading edge, tips mostly clear, pale stigma (sometimes missing), beige stripes down sides of each abdominal segment

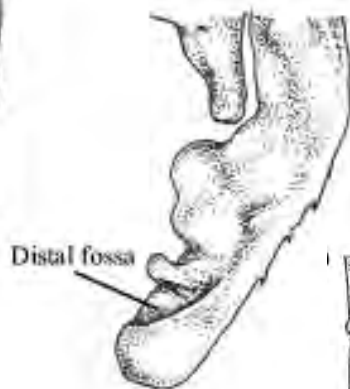
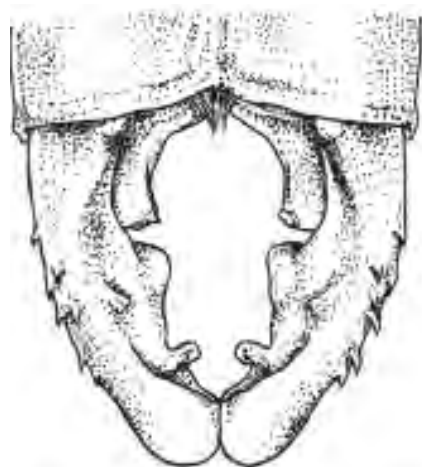
**behavior:** males hold territory at moving water; perch with head lower than abdomen, wings held together above or to one side of abdomen

**habitat:** open streams, rivers

**Jalisco flight season:** flies all year

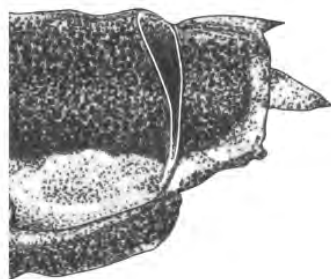
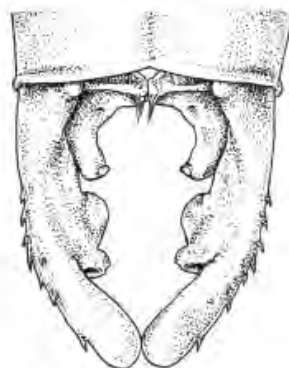


## Calvert's Rubyspot (*Hetaerina calverti*)

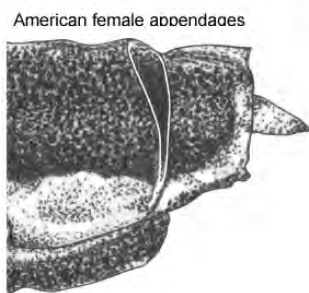


Calvert's Rubyspot's appendages  
to the left

American Rubyspot's  
appendages below



Calvert female appendages



American female appendages



**This species was recently split from the American Rubyspot (2020)**

**photos:** drawing of appendages & of American Rubyspot's appendages from Type description; photo of male

**size:** medium/large, length 40-46 mm

**male:** this species just recently split from the **American Rubyspot**;  
VERY similar; differentiate by appendages and habitat

**female:** very difficult to distinguish from **American Rubyspot** female without a microscope

**behavior:** males hold territory at moving water; perch with head lower than abdomen, wings held together above or to one side of abdomen

**habitat:** open streams, rivers in drier habitat than Am.

**Jalisco flight season:** month 1, 3-6, 8-10 thus far

## Canyon Rubyspot (*Hetaerina vulnerata*)



**photos:** males and female

**size:** medium, length 40 - 49 mm

**male:** red at wing base usually less extensive than American Rubyspot's; smoky edge/wing-tip; no stigma;  
compare by appendages - American's upper appendages have 1-2 toothlike lobes inside at midpoint while Canyon's lack these lobes

**female:** less red; thorax top metallic green; wing patches orangish, no stigma, smoky wing tips

**behavior:** males hold a territory at moving water sites; usually don't hold wings together to one side of abdomen like **American Rubyspot**

**habitat:** canopied streams, rivers

**Jalisco flight season:** months 2-4, 7, 10-12 thus far



## Smoky Rubyspot (*Hetaerina titia*)



**photos:** male and appendages (from side) and female

**size:** medium/large, length 40 - 51 mm

**male:** quite variable; in Jalisco, there is very little dark beyond the basal red in the wings but the wing tips are smoky; chestnut-colored thorax; abdomen mostly black;  
lower appendages curve upward

**female:** four green spots on the top of the chestnut-colored thorax  
are diagnostic; pale stigma

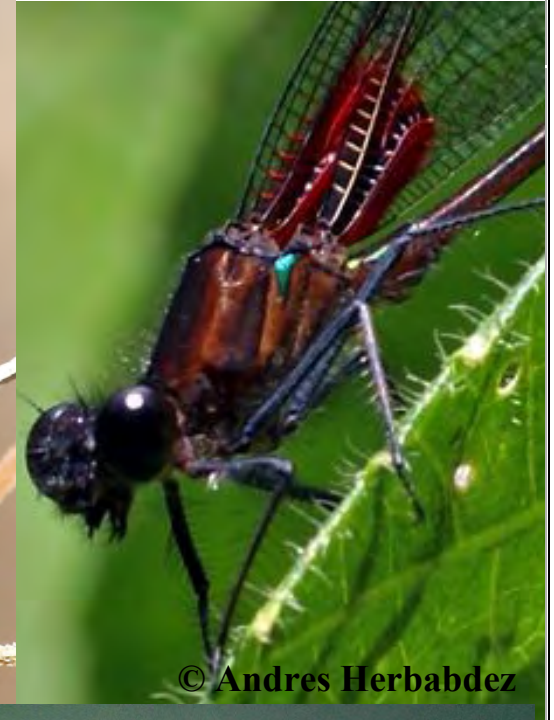
**behavior:** males hold territory at moving water sites; usually perch horizontally

**habitat:** sandy-bottomed streams, rivers

**Jalisco flight season:** months 1-3, 5-12 thus far



## Highland Rubyspot (*Hetaerina cruentata*)



**photos:** males (close-up & appendages) and female

**size:** medium/large length 41- 48 mm

**male:** like other Rubyspots, has red at base of wing with a dark tip, no stigma; the bright green triangle on the side of the thorax is diagnostic

**female:** less colorful; wings without red, only amber wash and not dark at tip; green triangle and stripe on thorax side and top

**habitat:** not found at lower elevations

**Jalisco flight season:** months 1-4, 8-11 thus far





## Racket-tipped Rubyspot (*Hetaerina occisa*)



**photos:** male & appendages (from below) and female

**size:** medium, length 35-48 mm

**male:** ruby red color at base of wings with a distinct jewel-like red colored spot at tip of wings; S1-3 usually red on top;  
long, racket-shaped lower appendages

**female:** lacks jewel-like spot at wing-tips; top of thorax with green sheen; wings slightly smoky; prothorax (neck-like area) has sideways projections, lacking in female **Smoky Rubyspots**

**behavior:** males hold territory at moving water sites; sometimes perch with head lower than abdomen & wings held together above or to one side of the abdomen

**habitat:** open clear streams, rivers

**Jalisco flight season:** flies all year

## Bronze Rubyspot (*Hetaerina capitalis*)



**photos:** males

**RARE in Jalisco** - please report all sightings

**size:** large, length 45-50 mm

**male:** wings with stigma present, basal red hindwing patch shortened, indistinct red-brown tip of wing; lower appendages very short; brown thorax with thin pale stripes; large nose-like structure that lies between the eyes is metallic blue-green

**female:** stigma present; metallic markings green; side stripe reaches thorax end; large nose-like structure that lies between the eyes is metallic green.

**behavior:** males hold territory at moving water sites; often perch with head lower than abdomen

**habitat:** wooded small clear streams

**Jalisco flight season:** months 6, 7, 9, 11, 12 thus far





## Part VIII: Pond Damsels (Coenagrionidae) - 45 species documented in Jalisco

=!=!=!=!=!=!=

### Quick Guide to the Pond Damsels—12 genera —the 5 most common:

#### Dancers —*Argia*

Most are blue and black, some purple/red  
Hold their wings together sail-like over the  
body; at moving water—25 species



#### Bluets —*Enallagma*

Blue and black; hold their wings alongside their  
abdomen when at rest;  
on still waters—4 species



#### Threadtails — *Neoneura/Protoneura*

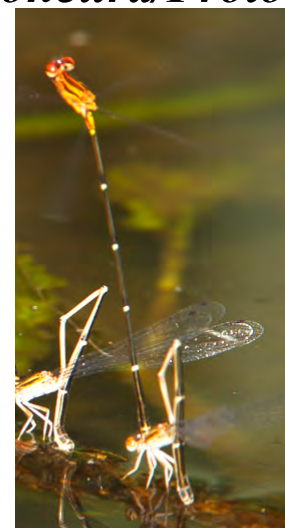
#### Firetails —*Telebasis*

Abdomens all red—3 species



#### Forktails —*Ischnura*

Small and black with blue/green on head  
and tails—5 species



Extremely  
thin long  
abdomens;  
red/orange  
— 3  
species

## Painted Damsel (*Hesperagrion heterodoxum*)



**photos:** male, young female, mature female

**size:** small/medium, length 27-35 mm

**male:** red eye spots; red top S8-10; yellow under S1-7; thorax top with 4 blue marks, sides blue, yellow brown in immature; coloration variable by age - immature all orange (above right)

**female:** only top of S7 blue; thorax top with blue triangles; coloration quite variable with age

**habitat:** creeks and streams

**Jalisco flight season:** months 3-5, 9, 10 thus far



## Big Red Dancer (*Argia funcki*)



**photos:** male and pair and female showing 2 female color forms



**size:** VERY large for a damselfly, 47-54 mm; Mexico's largest *Argia*

**male:** bright red where most Dancers are blue; thorax has 2 parallel wide butt unforked side stripes; abdomen tipped in red with reddish rings; stigma red in center

**female:** several color forms, can be like male, blue or brown; stigma shows reddish color

**behavior:** perch high above the water on trees, boulders and cliff faces; become more active as the day warms up

**habitat:** fast moving, mid-elevation stream and rivers

**Jalisco flight season:** months 1, 5-8 thus far



## Fiery-eyed Dancer (*Argia oenea*)



**photos:** male and tandem ovipositing pair

**size:** small/medium, length 33-39 mm

**male:** upper & front of eyes bright red; coppery orange face;  
top of thorax dark metallic coppery red; abdomen S3-6 blue/purple  
above with S8-10 all blue; wings clear

**female:** eye color more muted if showing any red at all;  
tan/brown coloration; top of thorax without red;  
deeply forked side thoracic marks

**behavior:** Dancers hold their wings closed, above the body when  
perched, often clapping them together;  
females may oviposit completely submerged

**habitat:** shallow rocky streams and rivers

**Jalisco flight season:** flies all year





## Amethyst Dancer (*Argia pallens*)



**photos:** males and dark form female (bottom)

**size:** medium/small, length 32-35 mm

**male:** almost all violet /rose & very pale, even eyes, legs & tops of S8-10; top thoracic stripe thin & narrow, dark side stripe very thin and pinched at middle; prothorax ("neck") violet; pale stigma; no triangles down side of abdomen; S7 pale, not black

**female:** dark tan to rose

**habitat:** small streams at low altitudes

**Jalisco flight season:** months 2-12 thus far

Springwater Dancer (*Argia funebris*), formerly *A. plana*



**photos:** male and female

**size:** small/medium, length 33-40 mm

**male:** purple coloration; the top stripe is shaped like a coffin;  
unforked pinched side stripes; S4 and 5 each have a small  
triangle that points rearward, S7-10 unmarked pale blue

**female:** like male or pale browns

**habitat:** canopied streams, seeps

**Jalisco flight season:** flies all year



## Spine-tipped Dancer (*Argia extranea*)



© Dave Biggs

**photos:** male and tandem ovipositing pairs

**size:** small, length 32-37 mm

**male:** blue-colored or light purple with wide, parallel-sided top thoracic stripe, stair-stepped side stripe; saddle-shaped spot side of S2, S3-6 each with an isolated triangle that points backwards, S7 has blue/purple atop ~50%, S8-10 blue with thick black line along the bottom edge

**female:** marked like male but less colorful; darker face; 2 forms, one blue & one tan

**behavior:** Dancers hold their wings closed, above the body, often clapping them together

**habitat:** small rocky &/or sandy streams, usually with a lot of emergent vegetation

**Jalisco flight season:** flies all year



© Laura Gaudette

## Variable Dancer (*Argia fumipennis*)



**photos:** male and female **RARE in Jalisco** - please report all sightings

**size:** small, length 24-29 mm

**male:** violet when mature; thoracic shoulder stripe forked; top stripe wide & straight; lower half of thorax without contrasting white; "tail" is violet with black under S8-10; sometimes slightly smoky wings

**female:** like male but light brown or tan with wide black stripe on abdomen side

**behavior:** prefers slow moving areas of streams

**habitat:** slow streams, ponds

**Jalisco flight season:** months 4, 5, 7-10 thus far



## Cerulean Dancer (*Argia anceps*)



**photos:** male and female

**size:** medium length 37-41 mm

**male:** bright sky blue species with very little black; wings can be amber-tinted; large eyespots; ALL the abdominal segments are blue on the top; side stripe pinched but not forked; S2 has short dark stripe on the side; appendages black

**female:** like male or tan; narrow line atop thorax; simple abdomen segments with a single small mark at the rear of each; amber-tinted wings

**habitat:** small rocky streams

**Jalisco flight season:** flies all year



## Celestial Dancer (*Argia variabilis*)



**photos:** males & female drawing **RARE in Jalisco**

**size:** medium, length 33.6-35.7 mm

**male:** bright sky blue species with very little black;  
ALL the abdominal segments are blue on the top;  
side stripe pinched but not forked; top stripe is  
narrow; S2 has short dark stripe on the side;  
appendages black

**female:** blue coloration is duller, shows triangles alongside abdomen

**similar species:** **Cerulean Dancer** has wider top stripe;

**Sierra Madre Dancer** shows black between S7&8 and top stripe is wider

**habitat:** forested areas at waterfalls

**Jalisco flight season:** months 6, 7, 11 thus far



*A. variabilis*

© Rosser Garrison



## Sierra Madre Dancer (*Argia lacrimans*)



**photos:** males and female

**size:** medium, length 37-46 mm

**male:** blue and black species with clear wings; large eyespots; thorax side stripe can be pinched or forked; abdominal S3 & 4 have incomplete bands versus S5&6 which have complete bands, S8-10 blue;  
seen from above, the front 75% of S7 is blue; pale appendages

**female:** like male or pale browns; bold paired spots on S8,9; the bold pattern on S3-6 swells ventrally at the rear S8 & 9 blue

**habitat:** small rocky streams in wooded areas

**Jalisco flight season:** months 3-11 thus far

## Harkness's Dancer (*Argia harknessi*)



**photos:** male and ovipositing females

**size:** medium, length 39-44 mm

**male:** bright blue with unforked side stripe; abdomen with S7 black, S3-6 with blue points pointing towards "tail", S8-10 blue with dark lower edges

**female:** patterned like male but points replaced by streaks

**habitat:** rivers

**Jalisco flight season:** flies all year



## Apache Dancer (*Argia munda*)



**photos:** males and female (in tandem)

**RARE in Jalisco** - please report all sightings

**size:** medium, length 36-40 mm

**male:** thin top and unforked side thoracic stripes, conspicuous pale line low on side of thorax gives it a bi-colored look

**female:** like male or pale browns

**habitat:** canyon streams, even intermittent

**Jalisco flight season:** months 5, 9 thus far



## Aztec Dancer (*Argia nahuana*)



**photos:** male and female

**size:** small length 25-35 mm

**male:** bright sky-blue; thorax shoulder stripe variably forked (lower stripe can be interrupted; blue "tail" S8-10; distance between lower appendages from above less than width of individual appendages; usually a spot, rather than a dash, on S2 side

**female:** less colorful, thicker bodied than male; one form like male; other is tan and black

**behavior:** Dancers hold their wings closed, above the body when perched, often clapping them together

**habitat:** slow waters

**Jalisco flight season:** months 4-7, 9 thus far



**\*Anna's Dancer (\*=proposed name) (*Argia annae*)**



**photo:** male and female drawing **RARE in Jalisco** - please report all sightings

**size:** medium, length 38-39 mm

**male:** bright blue-colored; large blue postocular eye spots triangular in shape and not connected by an occipital bar; black thoracic side stripe forked; blue atop all abdominal segments with S2 having an irregular triangular black spot, S4-7 with side spots, S7 mostly blue. no black stripe under S8-9; wings clear

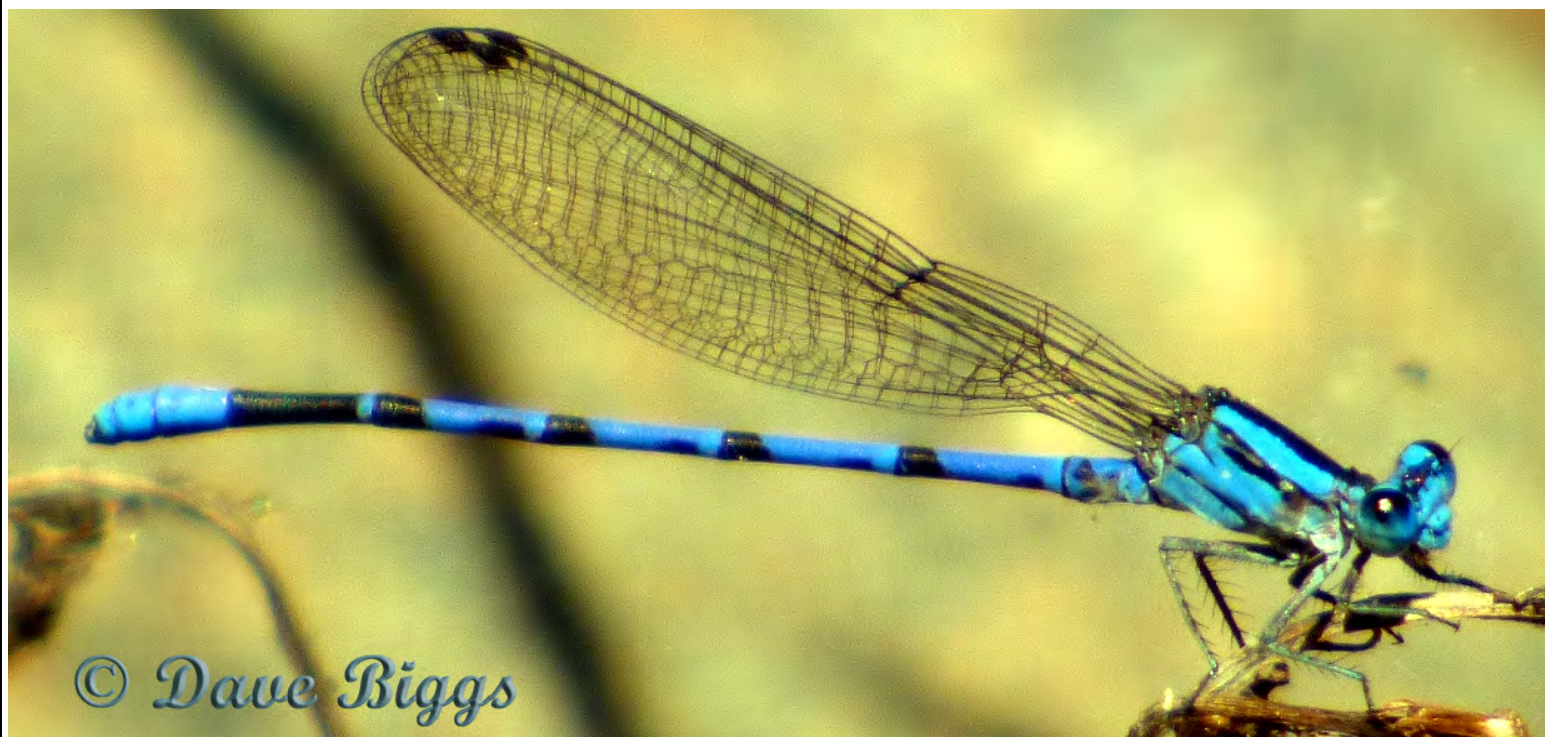
**female:** similar to male but pale colors a lighter blue; head with more extensive black

**behavior:** Dancers hold their wings closed, above the body, often clapping them together

**habitat:** roadside seepages at elevations from about 40 to 1830 m.

**Jalisco flight season:** month 9 thus far

**Yaqui Dancer** (*Argia carlcooki*) **VULNERABLE SPECIES (G2G4)**



**photos:** male and female

**size:** small, length 30-33 mm

**male:** blue-colored with thickly-forked side thoracic stripe;  
S3-6 have long dark triangles along side, S8-10 blue on top  
and sides and black underneath, S7 all dark

**female:** more strongly marked than male

**behavior:** Dancers hold their wings closed, above the body,  
often clapping them together

**habitat:** lushly vegetated streams

**Jalisco flight season:** flies all year





## Tarascan Dancer (*Argia tarascana*)



**photos:** male and 2 females

**size:** medium, length 34-39 mm

**RARE in Jalisco** - please report any sightings

**male:** blue and black species with wide, variably forked side stripe, top split forms a backwards pointing arrow; large eyespots; abdominal S3-6 each have a black band covering less than 1/3 of the segment, S8-10 blue

**female:** like male or pale browns

**habitat:** streams, ditches

**behavior:** Dancers hold their wings closed, above the body when perched, often clapping them together

**Jalisco flight season:** months 6?, 7-9, 11, 12 thus far



## Sabino Dancer (*Argia sabino*)



**photos:** male and female **RARE in Jalisco** - please report any sightings

**size:** medium, length 36-39 mm

**male:** blue/indigo coloration; side stripe wide and forked with an "island" of color at end; S3-5 have a complete black band at the rear that covers about 1/3 of the segment; S6 is 50/50 black & blue, S7 all black on top

**female:** similar to male but tan and light blue or tan and dark with ringed abdomen

**behavior:** Dancers hold their wings closed, above the body when perched, often clapping them together

**habitat:** pools near waterfalls; streams with large boulders

**Jalisco flight season:** month 8 thus far





## Oculate Dancer (*Argia oculata*)



**photos:** male, tandem pair,  
male-like female

**size:** small/medium, 33-39

**male:** abdomen mostly dark with backwards pointing blue arrows atop the segments nearest the thorax; side thoracic stripe wide and forked; "tail" black on underside with blue on top of S8-10

**female:** thorax like male, but abdomens with rings, not points. Blue and tan forms

**behavior:** Dancers hold their wings closed, above the body, often clapping them

**habitat:** ponds; slow moving water

**Jalisco flight season:** flies all year

**Note:** formerly called the Blue-point Dancer

## Ulmec Dancer (*Argia ulmeca*)



**photos:** males and female in tandem **RARE in Jalisco** - please report any sightings

**size:** large, length 40-46 mm

**male:** blue-colored with thickly-forked side thoracic stripe, wide top stripe; abdomen black with thin blue ring at each segment break, unique dark mark on S8; wings can show tinting

**female:** a little smaller, tan where male is blue and with pale side streaks on abdomen

**similar species:** **Oculate Dancer** has blue points on S3-5; **Purple Dancer** has eye spots connected by a bar

**behavior:** Dancers hold their wings closed, above the body, often clapping them together

**habitat:** mid-elevation rocky streams in pine/oak forest

**Jalisco flight season:** month 7 thus far



## Tezpi Dancer (*Argia tezpi*)



**photos:** male, blue female and tandem pair

**size:** small/medium, length 36-42 mm

**male:** very dark, even the face and eyes, eye-spots not very noticeable; thorax top all dark, sides two-toned; wings usually golden; all dark abdomen including S7-10 with 4 pale rings around segments

**female:** blue or brown; split thoracic side stripe

**behavior:** Dancers hold their wings closed, above the body when perched, often clapping them together

**habitat:** ponds & slow moving water

**Jalisco flight season:** flies all year

## Dusky Dancer (*Argia translata*)



**photos:** male and female

**RARE in Jalisco - please report any sightings**

**size:** medium, length 35-41 mm

**male:** very dark with pale rings and no blue on the 'tail';  
purplish tint to the body and luscious eyes;  
side stripe doubled and joined at the base;  
some cream color low on S8-10

**female:** like male or light tan; lack the luscious eyes

**behavior:** Dancers hold their wings closed, above the body  
when perched, often clapping them together

**habitat:** rivers

**Jalisco flight season:** months 6, 8 thus far





## Powdered Dancer (*Argia moesta*)



**photos:** male and both color forms of females    **RARE in Jalisco** - please report all sightings

**size:** medium, length 37-43 mm

**male:** large for a damselfly; develops chalky/powdery white/gray pruinosity with age, especially thorax; abdomen turns pruinose gray on S8-10

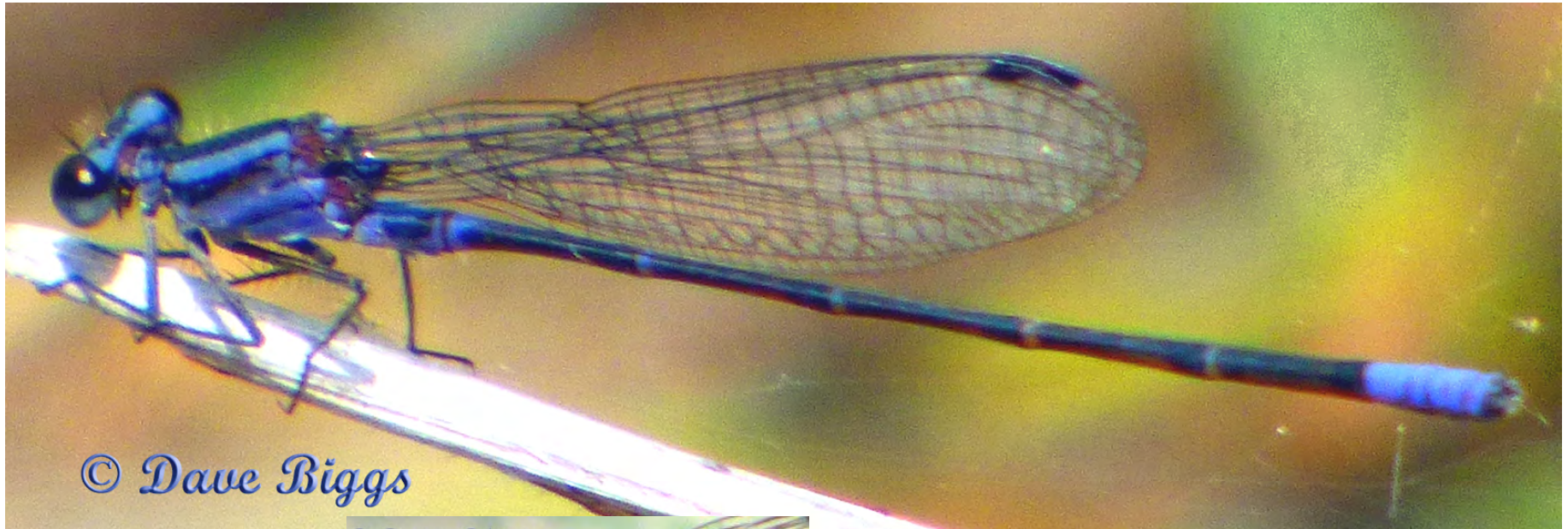
**female:** pale blue or light brown thorax; older females sometimes become a bit pruinose

**habitat:** rocky rivers, windy lakes

**Jalisco flight season:** months 8, 9 thus far



## Purple Dancer (*Argia pulla*)



**photos:** males and females

**size:** small/medium, 23-35 mm

**male:** purple ground color; dark abdomen with thin pale rings and purple tip; thorax with wide side stripe; dark blue eyes have connected purple eye-spots —

some males & females seem to have a thinner side stripe

**female:** brownish purple; some have darkened wings

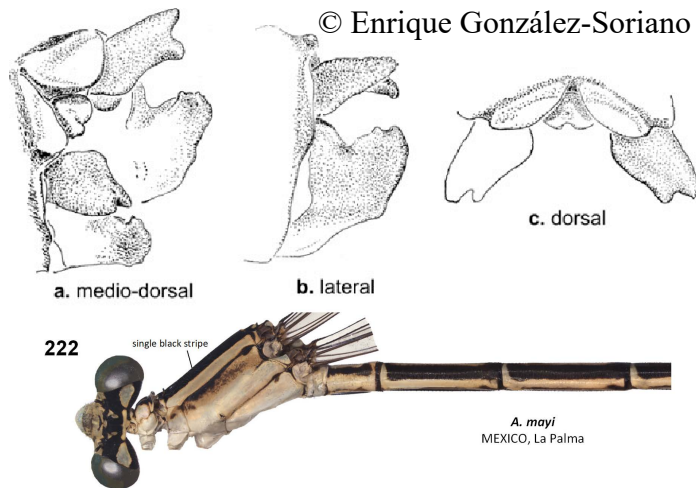
**behavior:** Dancers hold their wings closed, above the body, often clapping them together

**habitat:** ponds & slow moving water

**Jalisco flight season:** flies all year



## May's Dancer (*Argia mayi*)



**photos:** males and drawings of male's appendages; drawing of female **RARE in Jalisco** - please report all sightings

**size:** medium, length 30.4-32.3 mm

**male:** purple species with wide top thoracic stripe and coloration on the top of S1-8 and on tail tip it is restricted to S8-9 (not S10)

**female:** the mesostigmal plate (neck-like behind head) has erect hind margin

**similar species:** *Argia fumipennis* has S10 pale on top, no other male *Argia* in Jalisco has S10 dark

**habitat:** mid-elevation clear streams, endemic to Mexico

**Jalisco flight season:** months 8&9 thus far

## Neotropical Bluet (*Enallagma novaehispaniae*)



**photos:** male and female   **size:** small, length 29-35 mm

**male:** thorax blue or purple-blue, top stripe and side stripe parallel-sided and about the same width; large oval eye spots; long abdomen with blue atop S8 & 9 often separated by a dark ring; top appendages forked & extend considerably beyond lower appendages

**female:** one form like male or somewhat green; other mostly brown

**similar species:** **Claw-tipped Bluet** has blue/purple atop S4 on abdomen

**behavior:** Bluets usually hold their wings alongside abdomen rather than sail-like over their abdomen

**habitat:** pools of heavily vegetated streams



**Jalisco flight season:** months, 1-6, 9, 10, 12 thus far



## Claw-tipped Bluet (*Enallagma semicirculare*)



**photos:** male and female      **size:** small, length 30-32 mm

**male:** blue or purple with very long, smooth upper appendages that extend considerably beyond lower appendages; S7-9 blue/purple;  
top thoracic stripe wider than side stripe

**female:** like male but more blue

**similar species:** Neotropical Bluet has no blue/purple atop S4 on abdomen

**behavior:** Bluets usually hold their wings alongside abdomen rather than sail-like over their abdomen

**habitat:** heavily vegetated slow streams and ponds

**Jalisco flight season:** months 1, 2, 4, 5, 7-9, 12 thus far

## Familiar Bluet (*Enallagma civile*)



**photos:** male and female

**size:** small/medium, length 28-39 mm

**male:** markings more blue than black, S3-5 are mostly blue; top thorax stripe dark; small comma-shaped eyespots; top appendages longer than lowers, large and fin-like with pale "button," appear splayed

**female:** like male or tan and black

**similar species:** Arroyo Bluet has S4&5 mostly black and forked upper appendages

**behavior:** Bluets usually hold their wings alongside abdomen and fly low over water along shoreline or over submerged vegetation rather than sail-like over their abdomen

**habitat:** still waters with nearby fields

**Jalisco flight season:** months 2-12 thus far



## Arroyo Bluet (*Enallagma praevarum*)



**photos:** male, appendages and tandem pair

**size:** small, length 26-37 mm

**male:** S4-7 more black than blue with each segment usually 50% darker than the preceding one; S3 usually more than 50% black, S8 & 9 blue;

thorax top stripe dark; forked upper appendages

**female:** pale areas blue or tan; no blue on tail

**similar species:** **Familiar Bluet** has S4-7 more blue than black

**behavior:** Bluets usually hold their wings alongside abdomen rather than sail-like over their abdomen

**habitat:** lakes, ponds, streams

**Jalisco flight season:** months 3-11 thus far

## West Mexican Yellowface (*Neoerythromma gladiolatum*)



**hint:** when you can't see the face, look for the 3+ blue tail-end segments. All dancers and bluets have fewer segments blue

**photos:** male and ovipositing pair

**size:** small; length 28-31 mm

**male:** uniquely yellow on face; resembles a bright blue Bluet but with blue on 3 of the end of tail segments, including S7-9; wedge-shaped appendages

**female:** like male but with dull yellow-green face

**similar species:** like **Bluets** (*Enallagma*) but there are no Bluets with yellow faces or three segments with blue on tail end)

**Caribbean Yellowface** (*N. cultellatum*) has S7 all black, not found nor expected in Jalisco

**habitat:** ponds, flooded lagoons especially with grasses and sedges

**Jalisco flight season:** months 2, 3, 5-11 thus far





## Mexican Forktail (*Ischnura demorsa*)



**photos:** male, immature and mature female

**size:** small, length 21-33 mm

**male:** thorax sides & top have blue-green stripes; noticeable fine pale rings across each dark abdomen segment; blue tip has dark intrusions on sides; dual "forks" atop S10 are pale tipped

**female:** immature orange & black with S1-3 mostly orange; becomes all pale pruinose

**similar species:** Rambur's and Tiny Forktail lack black intrusion on S8 and have narrower blue/green stripes on thorax

**habitat:** weedy ponds, creeks

**Jalisco flight season:** flies all year

## Rambur's Forktail (*Ischnura ramburii*)



**photos:** male and immature female

**size:** small, length 27-36 mm

**male:** green-blue shoulder stripe very thin, parallel sided; tiny circular eye-spots not connected with a bar; thorax and S1-3 greenish-blue; yellowish-orange underside only on S3-7; blue surrounds

S8, part of 9, not top of 10; lower appendages point straight out

**female:** two forms, one form is very male-like or the other is Day-Glo

red/orange turning tan/olive with a wide black stripe on thorax top

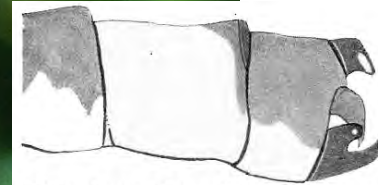
**similar species:** Citrine Forktail female's abdomen not all black; Tiny Forktail male has less blue on tail-tip; Mexican Forktail male is similar with much larger fork atop end of S10 and wider side stripes



**Jalisco flight season:** flies all year



## Tiny Forktail (*Ischnura capreolus*)



©Enrique González-Soriano



**photos:** mature male, appendages, immature females

**size:** very small, length ~22 mm

**male:** like Rambur's Forktail but smaller with less blue on tail tip and a large fork on S10, lower appendages forked with the lower fork the longest

**female:** lime green/yellow, blue S9 only

**similar species:** Rambur's Forktail female is without green; Mexican Forktail male is similar but with much larger fork atop end of S10

**habitat:** dense grass/sedge areas in marshes or at the edge of ponds

**Jalisco flight season:** months 4, 6-10 thus far

## Black-fronted Forktail (*Ischnura denticollis*)



© JUAN CARLOS GARCIA MORALES



© Steve Potter

**photos:** male and young female

**size:** very small, length 22-26 mm

**male:** no stripes or dots top of thorax; all dark above, sides of thorax blue (green in immature); blue patches on top & bottom of segments 8-9 do not touch; chartreuse underside; frail; upper appendages bent down; stigma has white margin at rear

**female:** thorax sides pale coral but when mature green/blue thorax sides

**habitat:** lakes, ponds, seeps

**Jalisco flight season:** months 3, 5, 7, 8, 10, 11 thus far



## Citrine Forktail (*Ischnura hastata*)



**photos:** male and immature and mature (insert) females

**size:** very small; length 21-25 mm

**male:** uniquely yellow on abdomen; yellow face; stigma one cell away from leading edge on front wing

**female:** wide black stripe atop thorax in both pruinoso mature form and immature orange form

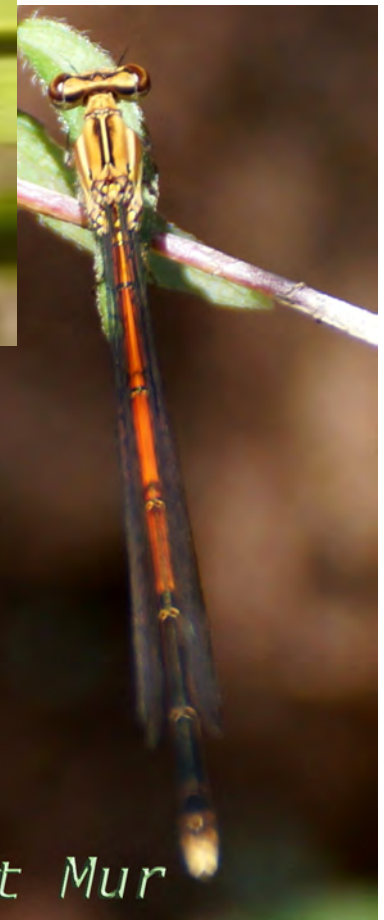
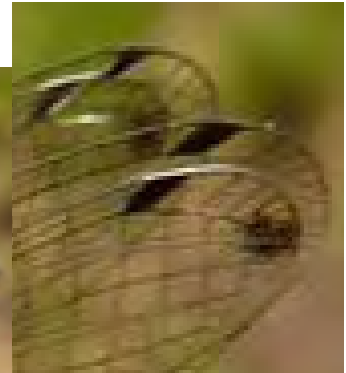
**similar species:** mature female **Mexican Forktail** lacks dark top stripe;

**Mexican Forktail** male is similar but with a much larger fork atop end of S10; no yellow on top

**habitat:** ponds, flooded lagoons; slow moving water

**Jalisco flight season:** months 1-6, 8-12 thus far

## Black and White Damsel (*Apanisagrion lais*)



**photos:** male, wingtip and immature female

**size:** medium, length 35-38 mm

**male:** all dark with thin green lines atop thorax and pale pruinosity S8-10;  
dark smudge-like mark at wingtip is diagnostic

**female:** like teneral males, bright orange when immature; male-like when mature

**behavior:** hovers in the shade; seen mostly in the mornings

**habitat:** wet margins of canopied streams and seeps

**Jalisco flight season:** flies all year



## Orange-striped Threadtail *Protoneura cara*)



**photos:** male and tandem ovipositing pairs

**size:** small, extremely thin; length 33-37 mm

**male & female:** both have very thin dark abdomens with pale rings; males show more orange on the thorax, eyes and face

**behavior:** females bend at extreme angles to oviposit, needing to "park" their very long abdomens between their wings for stability

**habitat:** ponds and river pools with abundant underwater vegetation reaching the surface

**Jalisco flight season:** flies all year



## Amelia's Threadtail (*Neoneura amelia*)



**photos:** male and tandem pair **RARE in Jalisco** - please report any sightings

**size:** small, extremely thin; length 31-34 mm

**male:** very thin body with red head, thorax and first 3 abdominal segments, rest of abdomen black with thin pale rings

**female:** like male but light olive replaces red except for eye-spots

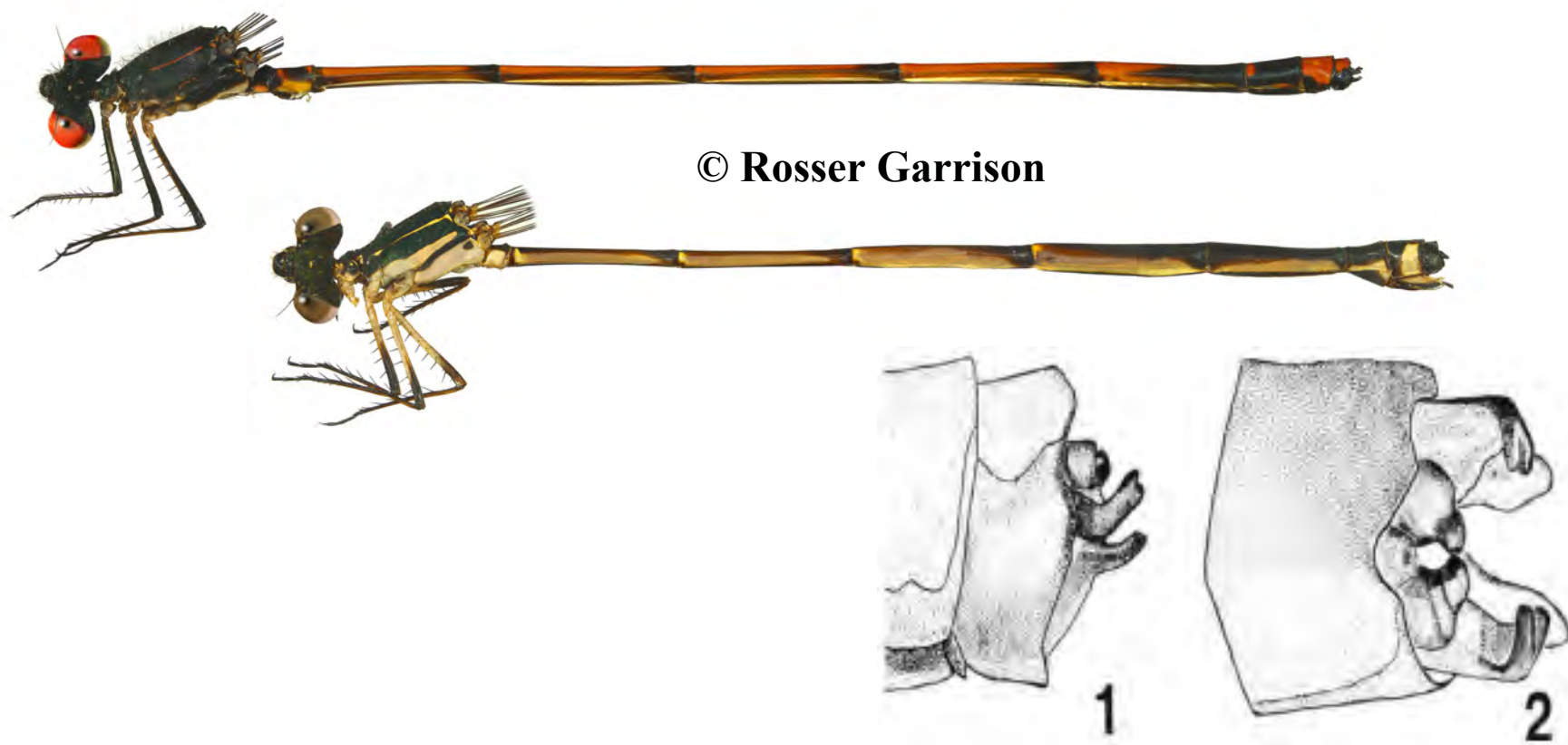
**behavior:** females bend at extreme angles to oviposit, needing to "park" their very long abdomens between their wings for stability

**habitat:** ponds and river pools with abundant underwater vegetation reaching the surface

**Jalisco flight season:** months 6, 7, 9, 10, 12



## Ruddy Threadtail (*Protoneura rojiza*)



Figs 1-2 abdominal appendages of male in side and underside views

**photos:** described by Gonzales; González Soriano, E., 1992 *Protoneura rojiza* spec. nov. a new damselfly from Mexico (Zygoptera: Protoneuridae), *Odonatologica* 21 (4): 489-493, figs. 1-8. **RARE in Jalisco** - please report any sightings

**size:** medium (but larger than other Threadtails in Jalisco), extremely thin, length 39-43 mm

**male:** black head with ivory "face"; thorax black with narrow red line, outer legs black, wings yellowish; blood red abdomen with dark markings atop the segments

**female:** like male but stripes on S1-2 yellow and abdomen reddish brown except S7-10 black

**habitat:** inland streams

**Jalisco flight season:** month 7 thus far

## Desert Firetail (*Telebasis salva*)



© Dave Biggs

**photos:** male and tandem ovipositing pair

**size:** very small, length 23-29 mm

**male:** dainty and slender; all red abdomen extends well beyond wing tips, tip of abdomen without black; red face and eyes; black eye spots; thorax red with black; pale legs

**female:** similarly marked; color varies from brown to tan to orange-red

**behavior:** tandem oviposit; eggs laid in algae mats and floating decomposing vegetation

**habitat:** shallow waters with algae scum and/or floating decomposing vegetation; lowlands

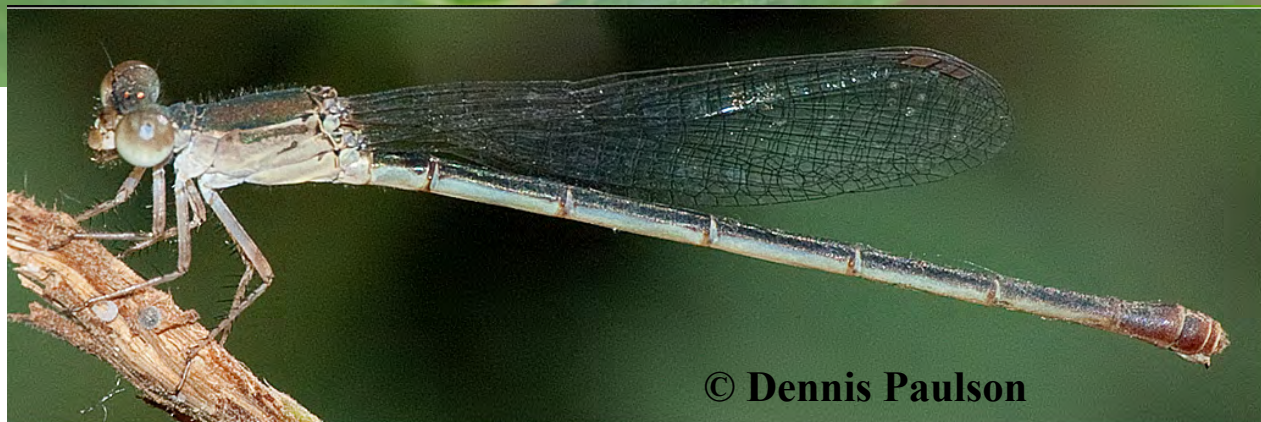
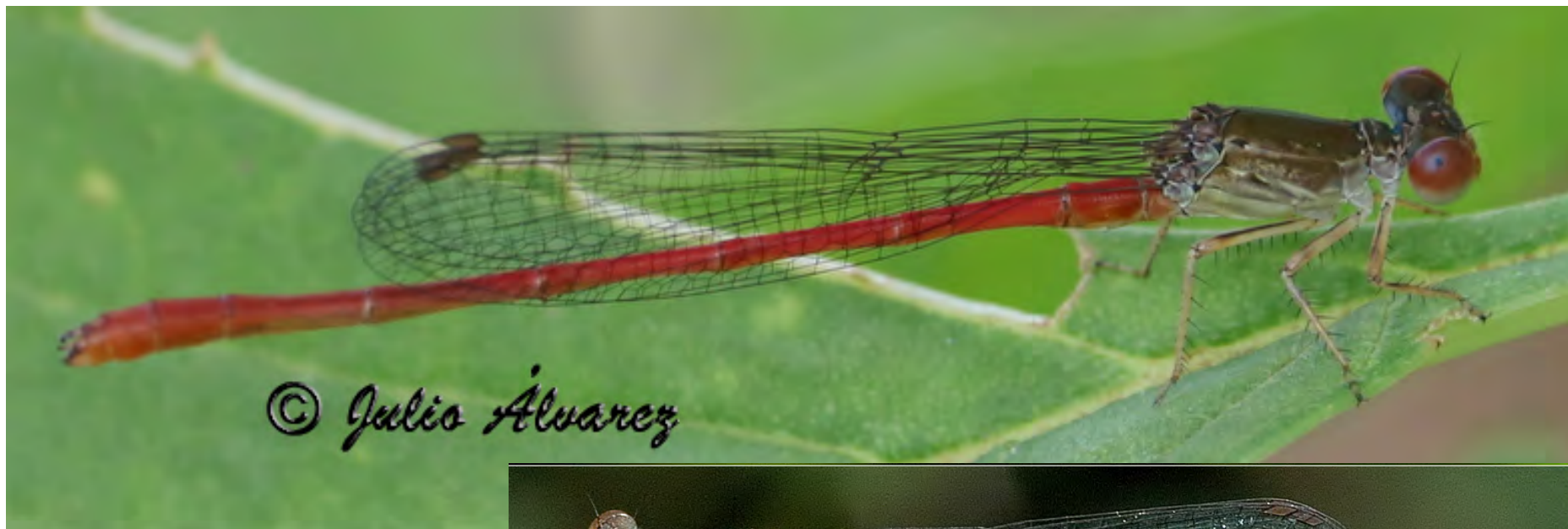
**Jalisco flight season:** flies all year



© Laura Gaudette



## Hyacinth Firetail (*Telebasis levis*)



**photos:** male and female

**size:** small/medium, length 28-32 mm

**male:** thorax top metallic black, thorax sides lighter colored

**female:** like male or lacks red; top of thorax dark without dark sheen

**behavior:** usually found on ponds and not far from them

**habitat:** ponds with many water hyacinths

**Jalisco flight season:** months 5-11 thus far

## Striped Firetail (*Telebasis filiola*)



**photos:** male and tandem pair

**size:** VERY small, length 20-26 mm

**male:** dainty and slender; all red abdomen extends well beyond wing tips;  
blue-green face and bottoms of eyes; thorax black with pale blue-green stripes;  
tip of abdomen without black

**female:** head and thorax like male; abdomen dark

**habitat:** small weedy ponds and marshes, especially with water hyacinths

**Jalisco flight season:** months 1-7, 9-12 thus far



## Middle American Pearlwing (*Anisagrion allopterum*)



© Doc Shark



© Pierre Deviche



**photos:** male, mature and immature female

**RARE in Jalisco** - please report any sightings

**size:** length, small/medium ~32 mm

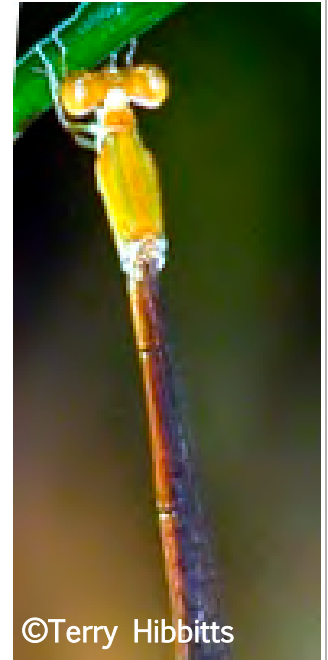
**male:** abdomen all black on top with some pearly blue under S1-3, & 7-9; thin pale rings S2-7 only; thorax with thick black stripe on top, side dark stripe thicker at front end, pearly blue as color on sides of thorax; small stigma with a hint of white at bottom

**female:** when young orange with dark near end of abdomen, there is much color variation with age, at maturity similar to male with pruinosity on tip instead of blue under the tip

**habitat:** mid-elevation wetlands including marshy ponds and slow streams in or out of forest

**Jalisco flight season:** months 4, 8, 9, 11 thus far

## Red-tipped Swampdamselfly (*Leptobasis vacillans*)



**photos:** mature male, immatures and female

**RARE in Jalisco** - please report any sightings

**size:** medium but thin and long, length ~33 mm

**male:** when mature, thin green stripes on thorax, legs without black bands; abdomen red, green and dark with red tip S8-10

**female:** change greatly as they age, if they live long enough, they are male-like

**habitat:** presumably swamps

**Jalisco flight season:** months 7, 8 thus far



**Cream-tipped Swampdamsel** (*Leptobasis melinogaster*)



**photos:** male and female

**RARE in Jalisco** - please report any sightings

**size:** medium but thin, long, length 38-40 mm

**male:** green eyes & eye-spots; green stripes on thorax, black bands on legs; long, thin dark abdomen with tiny rings and pale pruinosity S7-10

**female:** shorter abdomen than male, with conspicuous dark rings; no pruinosity; pale blue-green on thorax

**habitat:** shaded pools in slow moving streams, especially with tall grasses

**Jalisco flight season:** months 1, 7, 8 thus far

## Lemon-tipped Helicopter (*Mecistogaster ornata*)



**photo:** young male, female in flight and mature male scan

**size:** VERY LONG/SLENDER, length 73-102 mm

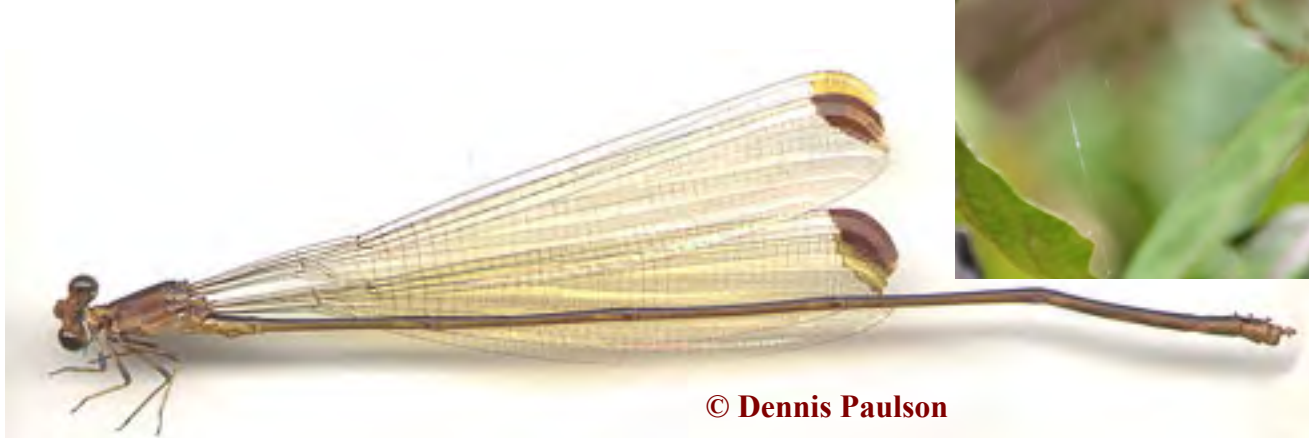
**male:** wing-tips yellow with very long abdomens;  
in breeding season wingtips turn dark brown

**female:** wing-tips yellow; very long abdomens

**behavior:** when flying, only the colored wingtips show, making it look like a twinkling light in the jungle; prey on spiders in their webs;  
hang perch; females lay their eggs in puddles formed in tree holes

**habitat:** areas in jungle with light gaps

**Jalisco flight season:** months 1-5, 7, 9-12 thus far





## Part VIII: Spreadwings (Lestidae) -

- 5 species documented; wings usually held open, long stigmas
- 2 genus of Spreadwings occur in Jalisco:

### Stream Spreadwings

#### *Archilestes*

—1 species

Found on moving water, long, hold their wings out to their sides



### Pond Spreadwings

#### *Lestes*

—4 species

Found on still water, not as large as Stream Spreadwings, hold their wings spread out delta style



## Great Spreadwing (*Archilestes grandis*)



**photos:** males and female

**size:** large, slender, length 50-62 mm

**male:** long abdomen is dark gray with greenish sheen, pruinose area near tip; one continuous pale side stripe on thorax side (yellow in mature); blue eyes & face; stigma dark when seen from above; top appendages semicircular, lowers are divergent; S9&10 pale pruinosity

**female:** like male, but tip of tail expanded; eyes and face less blue

**behavior:** wings held out straight from the body (spread); oviposit into tree branches overhanging wetlands

**habitat:** streams with overhanging Willow trees etc. where the females place their eggs into the bark

**Jalisco flight season:** flies all year



## Plateau Spreadwing (*Lestes alacer*)



**photos:** male and female

**size:** length, medium, slender, 34-45 mm

**male:** broad dark stripe top of thorax, dark side stripe variable width; pale side stripe usually a blue tint & narrowing to a point at rear, slightly convex; abdomen slender, esp. middle segments; reduced dark markings abdomen top; S1,2,8-10 become pruinose with age; lower appendages 75% of uppers

**female:** similar to male or with less blue

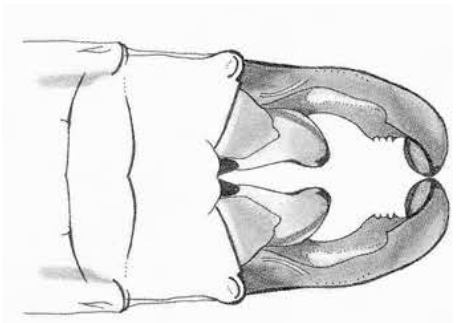
**habitat:** grass-edged ponds, slow streams at low elevations

**Jalisco flight season:** months 1, 2. 6-12 thus far

## Blue-striped Spreadwing (*Lestes tenuatus*)



© Ramón Trinchán



© Enrique González Soriano



© Jay Keller

**photos:** males, appendages and female  
**size:** medium, slender, length ~40 mm

**male:** large amount of blue on thorax side, second blue stripe below the upper thoracic stripe; very small amount of pruinosity at tail tip, no pruinosity on S10, only on S9

**female:** like male or paler blue and metallic brown

**habitat:** woodlands

**Jalisco flight season:** months 6, 8-12  
thus far



© Ramón Trinchán



**Wedge-striped Spreadwing (*Lestes scalaris*)** prior to 2024 Tikal Spreadwing ( *Lestes tikalus*)



**photos:** male, appendages (insert) and tandem pair

**size:** small/medium, very slender, length ~ 33-36 mm

**male:** stepped black spots on the pruinose blue thorax sides; long body gray with pruinose area S8-10, while S2 is shiny and not pruinose above; short dark stigma; the top appendages are semicircular and the lower ones are somewhat so, and the lower ones are almost as long as the uppers

**female:** brown/tan with some green on side of thorax, ovipositor very large extending to end of abdomen

**behavior:** wings held out delta-style from the body (spread); females place eggs in vegetation above where water will pool

**habitat:** shallow ponds and marshes, typically those that are dry in the dry season and re-flooded in next wet season

**Jalisco flight season:** months 2, 5, 8 thus far

## Chalky Spreadwing (*Lestes sigma*)



**photos:** mature male and ovipositing pair

**size:** medium, slender, length 41-45 mm

**male:** entire thorax becomes pruinose chalky whitish-gray; dark abdomen with segments 8&9 pruinose while S2 is 2/3 pruinose on top; blue eyes, short dark stigma can be bi-colored; lower appendages form an S-curve; immatures are tan with small dark spot on each side of thorax

**female:** similar to male; dark abdomen with S8-10 pruinose; short ovipositor

**behavior:** wings held out delta-style; females often place eggs in vegetation above where water will pool

**habitat:** shallow ponds

**Jalisco flight season:** months 1, 2, 6, 8-12 thus far



## Part IX: Other Damselfly Families—2 other families are documented:

**Shadowdamsels (Platystictidae)**      **& Bannerwings (Polythoridae)**

### Desert Shadowdamsel (*Palaemnema domina*)



**photos:** male and female, **RARE in Jalisco** - please report any sightings

**size:** medium, slender, length 42-45 mm

**male:** long abdomen dark with thin pale rings, S8&9 blue, S10dark;  
white frons; bright blue "neck"

**female:** like male but less blue or tan where male is blue

**behavior:** secretive; active at dawn and dusk and during light rains;  
dangle perch mid-day in cavities and overhanging cliffs

**habitat:** places with high humidity in deep shade

**Jalisco flight season:** months 7-10 thus far



## Blue Cora (*Cora marina*)



**photos:** male and female **RARE in Jalisco** - please report any sightings

**size:** medium, but bulky, length 42-45 mm

**male:** bright blue; amber-tinted wings with dark tips, long stigmas;  
blue atop S1-8, S9&10 all dark; blue "neck"; dark eyes

**female:** bulky and dark with light markings, wings less colored than male  
but with long stigmas

**habitat/behavior:** rocky forest streams where they perch in shade **Jalisco**

**flight season:** months 8, 9 thus far

**Note:** nymph have gills under abdomen, unusual among living odonates





**Glossary:**

**anal loop:** cluster of cells that are foot-shaped in the hind wing of some skimmers

**appendages:** extensions from the tip of the abdomen. Males use theirs to grasp the female during mating

**cerci:** upper appendages of male dragonfly

**cf.:** from the Latin "conferre," meaning "to compare," used in biology to represent uncertain identification but similar to the indicated species

**club:** referring to the expanded abdomen end, often seen on male Clubtails and a few other species

**costa:** leading vein of wing

**frons:** the uppermost part of the "face," like our forehead, but situated below and between the eyes

**labrum:** part of the "face," akin to an upper lip

**nodus:** indentation at midpoint of wing

**ovipositor/oviposit:** structure for egg laying near the end of the female's abdomen/act of laying eggs

**pruinose/pruinosity:** waxy coating a dragonfly can secrete to cover its original coloration, like the waxy coating on a plum

**S(1-10):** segment on abdomen, with S1 nearest the head

**stigma:** small thickened and darkened area on the leading wing edge near the tip

**TBD:** to be determined

**T-spot:** spot atop face of darners (*Aeshnidae*) that is useful in making identifications

**Notes:**

This guide could not exist without the skill and generosity of the following photographers:  
(listed in order of number of photos used and then in alphabetic order)

Dave Biggs  
Kathy Biggs  
Pierre DeViche  
Doug Danforth  
Terry Carr  
Laura Gaudette  
Dennis Paulson  
Greg Lasle  
Julio Alvarez Ruiz  
Rosser Garrison  
Troy Hibbitts  
Jim Burns  
Enrique González Soriano  
Carlos V. Macias  
Yesenia Vega  
.  
Juan Carlos Garcia  
Cindy Skeie  
Netta Smith  
Ricardo Arrendondo  
Torres .  
Tripp Davenport  
Alfredo D. Euan  
Leonora K. Gloyd  
Alvaro X. Hernandez Terry  
Hibbitts  
Plazi Treatment Bank  
Francisco Farriols Sarabia .  
Juan Alvarez  
J.Belle  
Georgia Born  
Ray Bruun  
Carlos Palomera Garcia  
Omar Carrea Rodrogiez

Juan Cruzado  
Leslie Flint  
Fernando Flores Emmanuel  
Guevara Lazcano  
Clarence Kennedy  
Gerard Marron  
Rodrigo Meza Fonseca Peter  
Moulton  
Art Mur  
Erland Refling Nielsen  
Ana Nuno  
Steve Potter  
Ruben A. Ramirez Garcia  
Pedro Rodriuez  
Doc Shark  
David F. Smith  
BJ Stacey  
Jay Thesken  
Jorge Vargas Ramirez  
.  
Drew Baxter  
Azucena Briones Munoz Jon  
Church  
Steve Collins  
Juan Cruzado Cortes Miguel  
L. Cueller  
Mark Dennis  
Francisco Farriols  
Jaguar Gozando Sciva  
Emmanuel Guevara Lazcano  
William A. Haber  
Vincent Heijden  
Andrew Herbabdez Mauricio  
Leonardo Hernández Escudero

Eric Hough  
Rich Hoyer  
Arlene Ibarra V  
Eric Isley  
Hannia Itzel  
Francisco Izquierdo  
Paul Johnson  
Anneke Jonker  
Jay Keller  
Jose E Mendoza  
Kevin Meza Fernandez  
Favio Mendes  
Bob Miller  
Veronik Moon  
Los Naranjos Retreat  
Liam O'Brien  
Ron Oriti  
Juan Pablo Gonzalez  
Gilberto Ponce  
Liam Ragan  
Tejeda Eduardo A. Recillas  
Owen Ridgen  
Mayela Rodriguez Gonzales  
Alam Sanchez  
Hernandez Sandez  
Christina Schwartz  
Robert Stevenson  
Owen Strickland  
Luis Trinchán  
Ramon Trinchán  
Ken-ichi Ueda  
Karen Vaquez  
Marceline Vandewater-Bruno  
Carolyn Wilson





© Kathy Biggs 2024 Last updated 2-'25

Companion Website is updated more frequently

- <https://bigsnest.powweb.com/southwestdragonflies/JaliscoOdes/JaliscoLINKS.html>